

ZyWALL 70

Internet Security Appliance



Recommended for

- Small and Medium Businesses looking for a cost-effective security appliance and VPN concentrator
- Businesses that have two Internet connections and require non-stop Internet services
- Businesses that are concerned about ease-of-use and remote management through a secure connection
- Organizations with up to 200 users
- Businesses that need a dynamically updated database to provide accurate web content filtering services (powered by Bluecoat)

Features

Virtual Private Network

- 100 simultaneous IPSec VPN Connections
- Max. 50Mbps 3DES/AES VPN performance
- Manual Key, IKE and PKI (X.509)
- IPSec NAT Traversal

Firewall Security

- Transparent Firewall (bridge mode)
- Stateful Packet Inspection
- DoS and DDoS Protection
- Real-time Attack Alert and Logs

Traffic Management

- Dual WAN auto fail-over, fall-back, policy router

- Dual WAN Load Balancing
- Policy-based Traffic Shaping
- Priority-bandwidth Utilization
- Guaranteed and Maximum Bandwidth Allocation

Content Filtering

- Java/Active X/Cookie/Proxy Blocking
- URL and Keyword Blocking
- Web Content Filtering (Bluecoat)

Network

- DHCP client/relay/server
- PPPoE
- PPTP

System Management

- WebGUI (HTTP and HTTPS)
- Command Line Interface (Console, Telnet, SSH)
- Firmware Upgrade (WebGUI, TFTP/FTP/SFTP)
- Vantage Centralized Network Management

Wireless (Optional)

- IEEE 802.11b/11g compliant
- 128-bits WEP Encryption
- IEEE 802.1x Port-Based Authentication with RADIUS Client
- IPSec VPN over WLAN
- WPA

Specifications

Hardware Specification

- Power: 100 ~ 240 VAC
- LAN: 10/100 Mbps Ethernet
- WAN1 & WAN2: 10/100 Mbps Ethernet
- 4-port DMZ: 10/100 Mbps Ethernet
- Reset Button
- RS-232 DB9F: Console
- RS-232 DB9M: Dial Backup

- Extension Card Slot for Wireless ready & optional service*

Physical Specification

- Dimensions: 355(L) x 200(D) x 55(H) mm
- Weight: 2,600g

Operating Environment

- Operating Temperature: 5 ~ 45°C

- Operating Humidity: 20 ~ 95% (non-condensing)

Certification

- EMC: FCC Class B, CE-EMC Class B, C-Tick Class B, VCCI Class B
- Safety: CSA International, CE EN60950-1

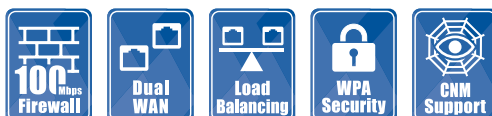
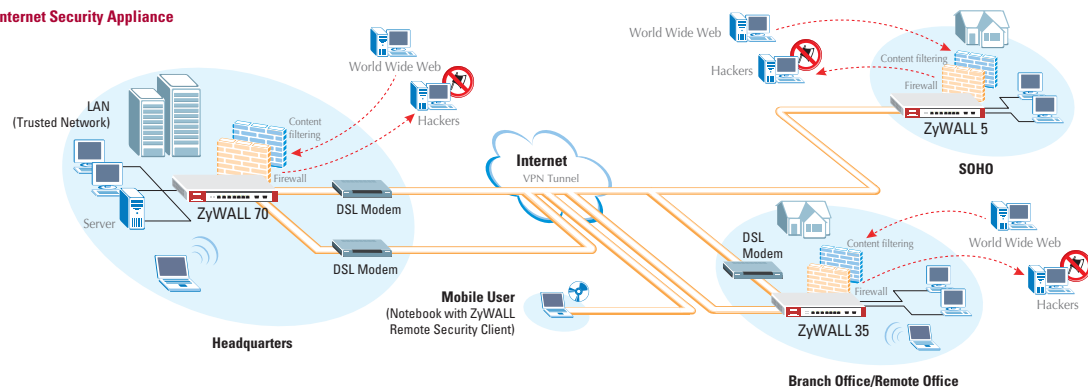
MTBF (Bellcore model)

- 40.9 years

* For future release

Application Diagram

Internet Security Appliance



ZyXEL
Unleash Networking Power

Feature Matrix

Model Name	ZyWALL 2	ZyWALL 5	ZyWALL 35	ZyWALL 70
Performance				
Firewall Throughput	12Mbps	80Mbps	90Mbps	100Mbps
VPN 3DES/AES Throughput	2.2Mbps	25Mbps	40Mbps	50Mbps
User Licenses	Unlimited	Unlimited	Unlimited	Unlimited
Concurrent Sessions	1,024	6,000	10,000	10,000
Simultaneous IPSec VPN connection	2	10	35	100
Physical Specification				
Ports (10/100Mbps Auto sensing & MDI/MDIX)	4xLAN, 1xWAN	4xLAN/DMZ, 1xWAN	4xLAN/DMZ, 2xWAN	1xLAN, 4xDMZ, 2xWAN
Extension Card Slot	-	•, Wireless and Optional Services*	•, Wireless and Optional Services*	•, Wireless and Optional Services*
RS-232 console	•	•	•	•
Power Supply	12VDC	12VDC	12VDC	100 ~ 240VAC
Rack-Mounted	-	•	•	•
Wall-Mounted	•	•	•	-
Dimensions (LxDxH, mm)	181 x 128 x 36	242 x 175 x 35.5	242 x 175 x 35.5	355 x 200 x 55
Weight	330g	1,200g	1,200g	2,600g
Mode of Operation				
Routing/NAT/SUA Mode	•	•	•	•
Transparent Mode	-	•	•	•
Dial Backup	•	•	•	•
Firewall (ICSA Certified)				
IP Protocol/Packet Filter	•	•	•	•
DoS and DDoS protections	•	•	•	•
Stateful Packet Inspection	•	•	•	•
Transparent Firewall	-	•	•	•
Web Content Filtering	•	•	•	•
VPN (ICSA Certified)				
Manual key, IKE	•	•	•	•
PKI (X.509)	•	•	•	•
Encryption (DES, 3DES and AES)	•	•	•	•
Authentication (SHA-1 and MD5)	•	•	•	•
IPSec NAT Traversal	•	•	•	•
Xauth User Authentication (Internal Database and External RADIUS)	•	•	•	•
Traffic Management				
Guaranteed/Maximum Bandwidth	-	•	•	•
Policy-based Traffic shaping	-	•	•	•
Priority-bandwidth utilization	-	•	•	•
High Availability (HA)				
Auto fail-over, fall-back	•	•	•	•
Dial Backup	•	•	•	•
Dual WAN ports for WAN backup and Load Balance	-	-	•	•
System Management				
WebGUI (HTTP and HTTPS)	•	•	•	•
Firmware Upgrade (WebGUI, TFTP/FTP/SFTP)	•	•	•	•
Vantage CNM	•	•	•	•
Wireless				
IEEE 802.11b Compliant	-	•	•	•
IEEE 802.11g Compliant	-	•	•	•
IEEE 802.1x Authentication (Internal Database and External RADIUS)	-	•	•	•
Logging/Monitoring				
Centralized Logs	•	•	•	•
Attack alert	•	•	•	•
System status monitoring	•	•	•	•

(*) For future release



Corporate Headquarters
ZyXEL Communications Corp.
 Tel: +886-3-578-3942
 Fax: +886-3-578-2439
 Email: sales@zyxel.com.tw
 http://www.zyxel.com
 http://www.zyxel.com.tw

Denmark
 Tel: +45 39 55 07 00 Fax: +45 39 55 07 07
 Email: sales@zyxel.dk
 http://www.zyxel.dk

Finland
 Tel: +358-9-4780 8400 Fax: +358-9-4780 8448
 Email: sales@zyxel.fi
 http://www.zyxel.fi

France
 Tel: +33 (0)4 72 52 97 97 Fax: +33 (0)4 72 52 19 20
 Email: info@zyxel.fr
 http://www.zyxel.fr

Germany
 Tel: +49 2405 6909 0 Fax: +49 2405 6909 99
 Email: sales@zyxel.de
 http://www.zyxel.de

North America
 Tel: +1-800-255-4101, +1-714-632-0882
 Fax: +1-714-632-0858
 Email: sales@zyxel.com
 http://www.us.zyxel.com

Norway
 Tel: +47 22 80 61 80 Fax: +47 22 80 61 81
 Email: sales@zyxel.no
 http://www.zyxel.no

Spain
 Tel: +34 902 195 420 Fax: +34 913 005 345
 Email: sales@zyxel.es
 http://www.zyxel.es

Sweden
 Tel: +46 31 744 7700 Fax: +46 31 744 7701
 Email: sales@zyxel.se
 http://www.zyxel.se