

# ZyWALL 35

## Internet Security Appliance



### Recommended for

- Small and Medium Businesses looking for a cost-effective and easy-to-deploy security appliance and VPN connection
- Businesses requiring reduced operational costs through flexible traffic management
- Businesses needing a dynamically updated database for accurate and effective Web Content Filtering services (powered by Bluecoat)
- Businesses that want to increase network efficiency, reliability and perform bandwidth load balancing
- Businesses looking for flexible port design with optional DMZ configuration

### Features

#### Virtual Private Network

- 35 simultaneous IPSec VPN Connections
- Max. 40Mbps 3DES/AES VPN performance
- Manual Key, IKE and PKI (X.509)
- IPSec NAT Traversal
- Xauth User Authentication

#### Firewall Security

- Transparent Firewall (bridge mode)
- Stateful Packet Inspection
- DoS and DDoS Protection
- Real-time Attack Alert and Logs

#### Content Filtering

- Java/Active X/Cookie/Proxy Blocking
- URL and Keyword Blocking
- Web Content Filtering (Bluecoat)

#### Traffic Management

- Policy-based Traffic Shaping
- Priority-bandwidth Utilization
- Guaranteed Bandwidth Management
- Maximum Bandwidth Management

#### High Availability

- Dual WAN ports Auto fail-over and fail-back
- Dual WAN ports for Load Balancing
- Dial Backup

#### Network

- DHCP client/relay/server
- PPPoE
- PPTP

#### System Management

- WebGUI (HTTP and HTTPS)
- Command Line Interface (Console, Telnet, SSH)
- Firmware Upgrade (WebGUI, TFTP/FTP/SFTP)
- Vantage Centralized Network Management

#### Wireless

- IEEE 802.11b/11g compliant
- 128-bits WEP Encryption
- IEEE 802.1x Port-Based Authentication with RADIUS Client
- IPSec VPN over WLAN
- WPA

### Specifications

#### Hardware Specification

- Power: 12VDC
- 4-port LAN/DMZ switch: 10/100Mbps Ethernet
- WAN1 & WAN2: 10/100Mbps Ethernet
- Reset Button
- RS-232 DB9F: Console

- RS-232 DB9M: Dial Backup
- Extension Card Slot for Wireless & Optional service\*

#### Physical Specification

- Dimensions: 242(L) x 175(D) x 35.5(H) mm
- Weight: 1,200g

#### Operating Environment

- Operating Temperature: 0 ~ 50°C
- Operating Humidity: 20 ~ 95% (non-condensing)

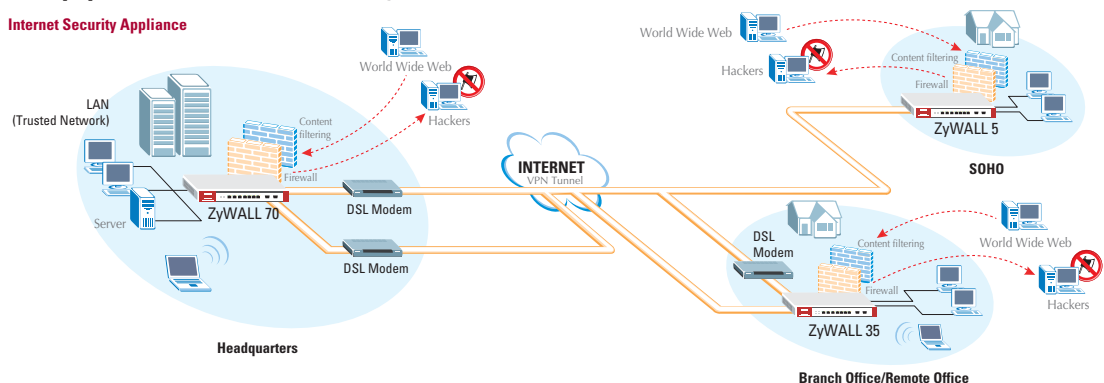
#### MTBF (Bellcore Model)

- 41.8 years

\* For future release

### Application Diagram

#### Internet Security Appliance



## Feature Matrix

Model Name	ZyWALL 2	ZyWALL 2WE	ZyWALL 10W	ZyWALL 35	ZyWALL 70
<b>Performance</b>					
Firewall Throughput	12Mbps	12Mbps	30Mbps	90Mbps	100Mbps
VPN 3DES/AES Throughput	2.2Mbps	2.2Mbps	16Mbps	40Mbps	50Mbps
User Licenses	Unlimited	Unlimited	Unlimited	Unlimited	Unlimited
Concurrent Sessions	1,024	1,024	1,024	10,000	10,000
Simultaneous IPSec VPN connection	2	2	10	35	70
<b>Physical Specification</b>					
Ports (10/100Mbps Auto sensing & MDI/MDIX)	4xLAN, 1xWAN	4xLAN, 1xWAN	1xLAN, 1xWAN	4xLAN/DMZ, 2xWAN	1xLAN, 4xDMZ, 2xWAN
Extension Card Slot	na	na	•, Wireless Services	•, Wireless and Optional Services*	•, Wireless and Optional Services*
RS-232 console	•	•	•	•	•
Power Supply	12VDC	12VDC	12VDC	12VDC	100~240VAC
Rack-Mounted	na	na	na	•	•
Wall-Mounted	•	•	•	•	na
Dimensions (L x D x H, mm)	181 x 128 x 36	233 x 155 x 30	233 x 155 x 30	242 x 175 x 35.5	355 x 200 x 55
Weight	330g	525g	525g	1,200g	2,600g
Others	na	2 antenna	na	na	na
<b>Mode of Operation</b>					
Routing/NAT/SUA Mode	•	•	•	•	•
Transparent Mode	na	na	na	•	•
Dial Backup	•	•	•	•	•
<b>Firewall (ICSA Certified)</b>					
IP Protocol/Packet Filter	•	•	•	•	•
DoS and DDoS protections	•	•	•	•	•
Stateful Packet Inspection	•	•	•	•	•
Transparent Firewall	na	na	na	•	•
Web Content Filtering	•	•	•	•	•
<b>VPN (ICSA Certified)</b>					
Manual key, IKE	•	•	•	•	•
PKI (X.509)	•	na	•	•	•
Encryption (DES, 3DES and AES)	•	•	•	•	•
Authentication (SHA-1 and MD5)	•	•	•	•	•
IPSec NAT Traversal	•	•	•	•	•
XAuth User Authentication (Internal Database and External RADIUS)	•	•	•	•	•
<b>Traffic Management</b>					
Guaranteed/Maximum Bandwidth	na	na	na	•	•
Policy-based Traffic shaping	na	na	•	•	•
Priority-bandwidth utilization	na	na	na	•	•
<b>High Availability (HA)</b>					
Auto fail-over, fail-back	•	•	•	•	•
Dial Backup	•	•	•	•	•
Dual WAN ports for WAN backup and Load Balance	na	na	na	•	•
<b>System Management</b>					
WebGUI (HTTP and HTTPS)	•	HTTP only	•	•	•
Firmware Upgrade (WebGUI, TFTP/FTP/SFTP)	•	WebGUI, TFTP, FTP	•	•	•
Vantage CNM	•	na	•	•	•
<b>Wireless</b>					
IEEE 802.11b Compliant	na	•	•	•	•
IEEE 802.11g Compliant	na	na	na	•	•
IEEE 802.1x Authentication (Internal Database and External RADIUS)	na	•	•	•	•
<b>Logging/Monitoring</b>					
Centralized Logs	•	•	•	•	•
Attack alert	•	•	•	•	•
System status monitoring	•	•	•	•	•

(\*) For future release



This product is designed for the 2.4GHz WLAN network throughout the EC region

**Corporate Headquarters**  
**ZyXEL Communications Corp.**  
 Tel: +886-3-578-3942  
 Fax: +886-3-578-2439  
 Email: sales@zyxel.com.tw  
 http://www.zyxel.com  
 http://www.zyxel.com.tw

**Denmark**  
 Tel: +45 39 55 07 00 Fax: +45 39 55 07 07  
 Email: sales@zyxel.dk  
 http://www.zyxel.dk

**Finland**  
 Tel: +358-9-4780 8400 Fax: +358-9-4780 8448  
 Email: sales@zyxel.fi  
 http://www.zyxel.fi

**France**  
 Tel: +33 (0)4 72 52 97 97 Fax: +33 (0)4 72 52 19 20  
 Email: info@zyxel.fr  
 http://www.zyxel.fr

**Germany**  
 Tel: +49 2405 6909 0 Fax: +49 2405 6909 99  
 Email: sales@zyxel.de  
 http://www.zyxel.de

**North America**  
 Tel: +1-800-255-4101, +1-714-632-0882  
 Fax: +1-714-632-0858  
 Email: sales@zyxel.com  
 http://www.us.zyxel.com

**Norway**  
 Tel: +47 22 80 61 80 Fax: +47 22 80 61 81  
 Email: sales@zyxel.no  
 http://www.zyxel.no

**Spain**  
 Tel: +34 902 195 420 Fax: +34 913 005 345  
 Email: sales@zyxel.es  
 http://www.zyxel.es

**Sweden**  
 Tel: +46 31 744 7700 Fax: +46 31 744 7701  
 Email: sales@zyxel.se  
 http://www.zyxel.se