

Vantage CNM 2.0

Centralized Network Management

Vantage CNM 2.0 (Centralized Network Management), is a browser-based, global management solution that allows an administrator to easily configure, manage, monitor and troubleshoot ZyXEL devices from any location.

Vantage CNM 2.0 allows you to effectively separate usage and management of ZyXEL's comprehensive range of devices.

With the remote management feature, system integrators, IT consultants or administrators can remotely manage devices, thus reducing the configuration and administration hassles associated with managing multiple devices. The Vantage administrator will always be able to provide end users with first class support, whether the need is to decipher a log, to upload new firmware, or to create new VPN tunnels. Device owners will be able to efficiently use their devices without worrying about how they work.

Furthermore, by using Vantage CNM 2.0, an administrator can ensure consistency and compliance with all security policies, constantly monitor all devices and provide immediate support.

These combined features allow for the rapid deployment of ZyXEL devices, minimizing the cost of management and maximizing device efficiency.

Simply put, Vantage CNM 2.0 is a must for organizations of all sizes that deploy ZyXEL devices. Its power and scalability make managing multiple ZyXEL devices easier than ever before.

Benefits

Reduce SMB IT Investment

- Lower the Total Cost of Ownership (TCO) by:
 - Cutting the costs of managing distributed networks
 - Reducing service and technical support overhead
 - Decreasing IT labor cost
- Improve network utilization and efficiency
- Easily expand to managing bigger networks with ZyXEL's complete product line

Allow MSSP to Provide Managed Security Services to SOHO/SMB Customers with Ease

- Remotely and centrally control firewall security policies according to multiple, individual customers' requirements
- Set up and maintain custom VPN tunnels
- Constantly monitor all devices and provide immediate support

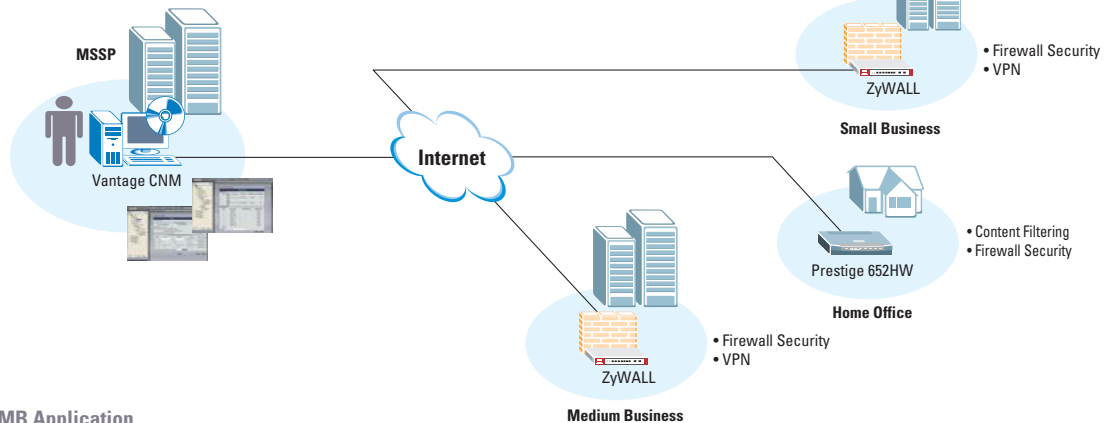
Expand Telco/ISP Customer Base

- Provide more service options to customers
- Lower cost of deployment with industry standard interface OSS (Operations Support Systems) integration*
- Offer management of globally well-known ZyXEL ADSL, wireless and Internet Security Devices
- Be able to expand service management in line with Telco/ISP's business growth*

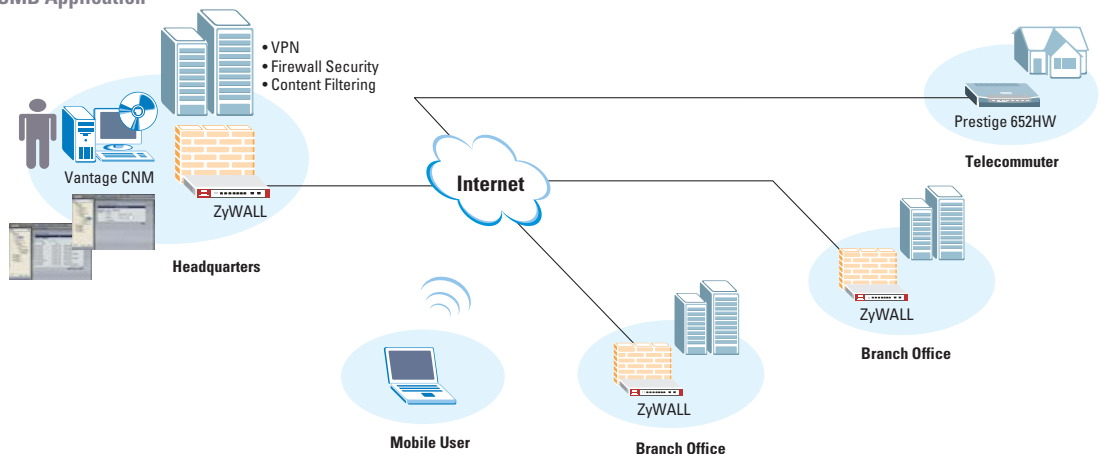
** Will be supported by project-based Vantage CNM 2.0, allowing management for up to 10K devices and supporting other features.*

Application Diagram

Managed Security Service Provider (MSSP) Application



SMB Application



System Requirements

- Client Browser: Microsoft IE 6.0 and later
- Server Requirements:
 - CPU: Pentium 4, 2.6GHz or faster
 - RAM: 1GB or more
- Operating Systems:
 - Win XP Pro Edition
 - RedHat Linux 9.0 and later (minimum kernel should be 2.4.18)

Models Supported

- ZyWALL 2, 2X, 5, 10W, 35, and 70 devices with ZyNOS firmware version 3.62 and later.
- Prestige 652HW-xx series with ZyNOS firmware version 3.4x and later
- Vantage CNM 2.0 can manage up to 300 devices of combination of above supported models, more model will be supported in later releases.
- Please check the www.zyxel.com product page for Vantage support details.

Ordering Information

- Vantage CNM 2.0 is available with different levels of device management limitation: 10, 25, 50, 100 and 300 devices.
- Extra software packages may be added at any time to allow the desired number of managed devices. Vantage CNM currently supports management for up to 300 devices; a project-based version for Telcos, ISPs or MSSPs will allow management for up to 10000 devices.



Corporate Headquarters
ZyXEL Communications Corp.
 Tel: +886-3-578-3942
 Fax: +886-3-578-2439
 Email: sales@zyxel.com.tw
<http://www.zyxel.com>
<http://www.zyxel.com.tw>

Denmark
 Tel: +45 39 55 07 00 Fax: +45 39 55 07 07
 Email: sales@zyxel.dk
<http://www.zyxel.dk>

Finland
 Tel: +358-9-4780 8400 Fax: +358-9-4780 8448
 Email: sales@zyxel.fi
<http://www.zyxel.fi>

France
 Tel: +33 (0)4 72 52 97 97 Fax: +33 (0)4 72 52 19 20
 Email: info@zyxel.fr
<http://www.zyxel.fr>

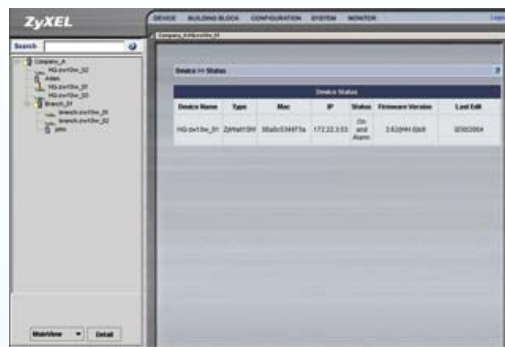
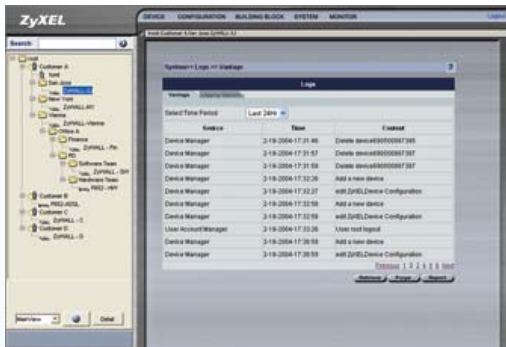
Germany
 Tel: +49 2405 6909 0 Fax: +49 2405 6909 99
 Email: sales@zyxel.de
<http://www.zyxel.de>

North America
 Tel: +1-800-255-4101, +1-714-632-0882
 Fax: +1-714-632-0858
 Email: sales@zyxel.com
<http://www.us.zyxel.com>

Norway
 Tel: +47 22 80 61 80 Fax: +47 22 80 61 81
 Email: sales@zyxel.no
<http://www.zyxel.no>

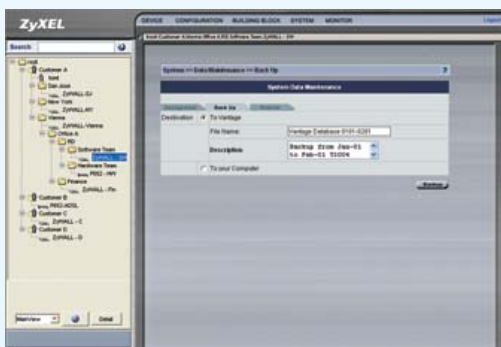
Spain
 Tel: +34 902 195 420 Fax: +34 913 005 345
 Email: sales@zyxel.es
<http://www.zyxel.es>

Sweden
 Tel: +46 31 744 7700 Fax: +46 31 744 7701
 Email: sales@zyxel.se
<http://www.zyxel.se>



Logs and Alarms

Logs and alarms facilitate the secure, smooth operation of all Vantage-registered ZyXEL devices across the globe. Logs give detailed information pertaining to customer accounts, devices and the Vantage CNM that is essential for troubleshooting or historical analysis. Alarms are real-time warnings of hardware failure, security breaches, attacks or illegal Vantage login attempts.



Vantage System Backup

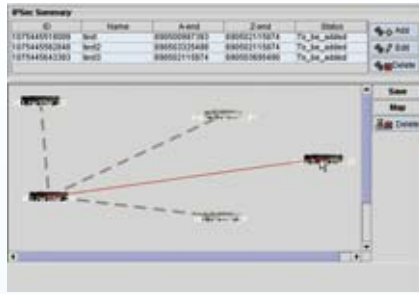
Back up all Vantage configurations including firmware uploaded to the Vantage server; create various Vantage “snap shots” that may be restored at a later date.



Building Blocks

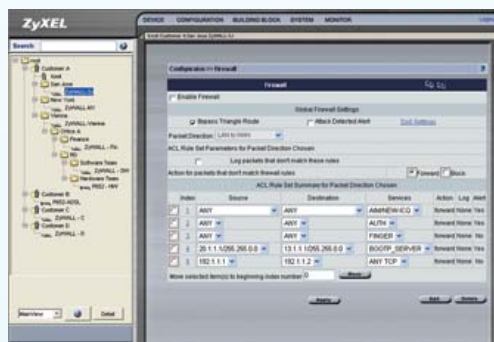
A building block is a reusable configuration “brick” that can be used to rapidly configure device(s). A BB can be a device’s total configuration, a single configuration such as WLAN, or a configuration component such as an IP address. This not only allows swift configuration of multiple devices but also ensures consistency across devices. The longer you use Vantage, the more BBs you accumulate, the easier it is to use.

Features



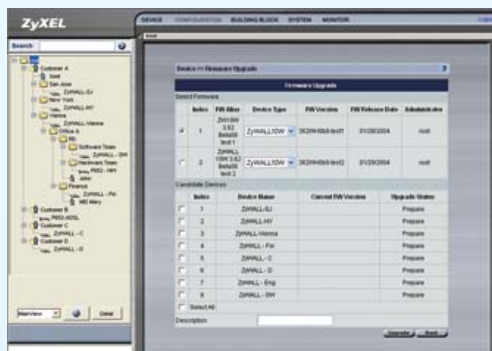
One-click VPN

Graphically create VPN (Virtual Private Network) tunnels between devices by simply clicking a device and dragging a “tunnel” to another device. Pre-configured tunnel settings mean that even non-technical administrators can set up and manage tunnels with minimum effort.



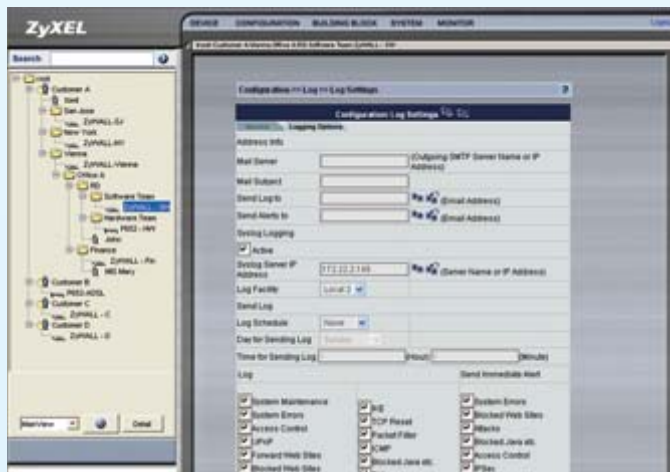
Centralized Firewall Management

Ensure consistency and compliance with all security policies, constantly monitor all devices, and provide immediate support.



Firmware Upgrade and Management

Simultaneously upload device firmware from Vantage to multiple devices located anywhere, minimizing time, effort and room for error as well as ensuring firmware consistency across devices. Devices owners can be notified automatically and reports can be generated detailing any devices firmware upload history.



Multiple Administrator, Multiple Domain Management

Multiple administrators may manage one domain, each with different permissions allowing autonomy while collaboratively managing the same networks.