



A Powerful Management Tool with Scalability for Massive Deployments

- CPE WAN Management Protocol TR-069, TR-104 and TR-098 Support
- Featured Load Balancing for High Availability
- Remote, Real Time Management of all Elements
- Group and Schedulable CPE Provisioning
- Web-based Management Tool for Scalability for Massive Deployment



Auto-Configuration
Server

VANTAGE
ACCESS

Benefits

Lower TCO for More Business Value

ISPs or Telcos often spend high cost on administrative and supporting tasks, but the initial TCO can be remedied significantly by the highly scalable architecture of ZyXEL Vantage Access. As business grows, the administrator can just add the required software modules to accommodate the needs. In addition, the High Availability (HA) also guarantees the unplanned user downtime to be minimized.

Service-Oriented Management Platform

With full compliance with the TR-069, TR-104 and TR-098 CPE WAN management protocols defined by the DSL forum, ZyXEL Vantage Access brings network managers an efficient and effective way to manage DSL and VoIP devices.

In terms of security, as deployment of strong confidentiality and authentication mechanisms such as TLS 3.0 or SSL 3.0 is required, the Vantage Access ensures safe communication to prevent forging and eavesdropping of network traffics.

In addition to device collaboration, the Vantage Access also collects real-time data. The data can be diagnostic information, DSL line quality or a Call Detail Record (CDR) that are used to perform data mining for Support or Sales teams.

Scalability for Massive Deployment

The friendly installation procedure and XML-based pre-configuration mechanism enable the administrators deploy the broadband service and network quickly. Group and scheduled configuration improves the efficiency of device provisioning. Standard-based CPE management implementations supporting multiple vendors' devices reduce the integration testing efforts.

A single Vantage Access server can support up to 100K CPE devices. With the powerful tool, as well as its High Availability (HA) and Load Balancing capabilities, the system administrators can be relieved even if the number of devices increases.

Friendly Web-Based Graphical UI Design

Step-by-step installation and friendly Web-based graphical GUI not only speeds up remote network management, but also service deployment, firmware upgrade and group operation configuration. If preferred, administrators can perform the group configuration at scheduled times; the pre-configuration and file management features also enable administrators to plan the network topology and deployment in advance.

System Requirement

Hardware

Server

- Two 3.06 GHz processors
- Four Gigabyte memory
- MSA 500 (optional disk array)

Client

- CPU: Intel P3 450 MHz or above

System

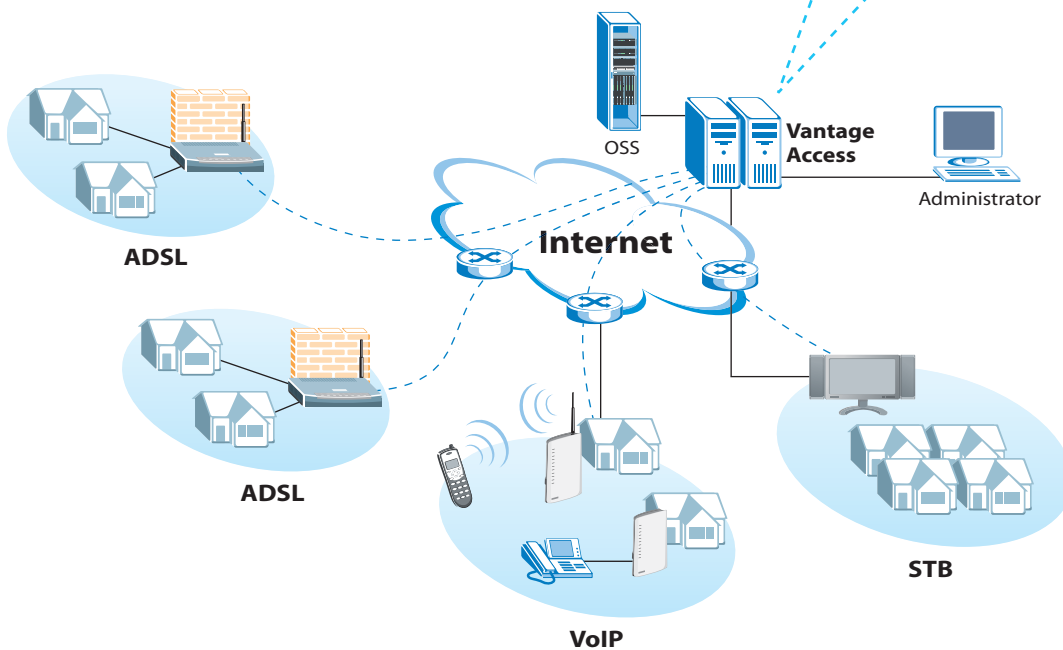
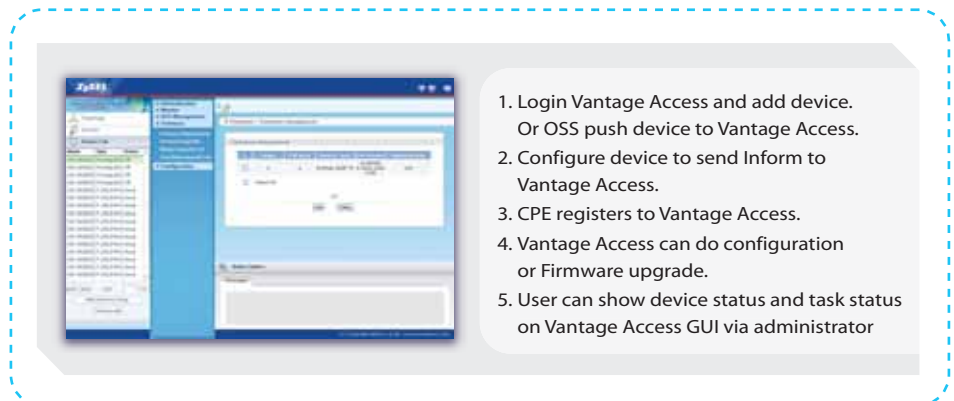
Server

- OS Red Hat Enterprise Linux ES 3.0

Client

- Internet Explorer 6.0
- Flash Player 9.0

Application Diagram



For more product information, visit us on the web www.ZyXEL.com



Copyright © 2006 ZyXEL Communications Corp. All rights reserved. ZyXEL, ZyXEL logo are registered trademarks of ZyXEL Communications Corp. All other brands, product names, or trademarks mentioned are the property of their respective owners. All specifications are subject to change without notice.