

ZyXEL VES-1124 V3.50(LP.1)

Release Note/Manual Supplement

Date: Jan. 26, 2005

This document describes the features in the VES-1124 product for its 3.50(LP.1) release.

Support Platforms:

ZyXEL VES-1124 V3.50(LP.1) supports models: ZyXEL VES-1124

Version:

ZyNOS Version: V3.50(LP.1) | 11/02/2004 17:20:55

BootBase Version: V1.01(VES-1124) | 01/24/2005 18:59:33

Known Issue:

1. Ethernet AC101 PHY are not compatible with specific PHY.
2. Cannot generate pause frame when multiple vdsl ports send packets to uplink port.
3. Bandwidth control works only when Flow control enabled.
4. When GVRP enable, leave timer and leave all timer should be increased when lots of dynamic VLAN join.
5. Per port PVID setting is limited in set range(1-255, 256-511,..., 3840-4094). If port 1 is set PVID in one of the set range, the other ports PVID also should be set to the same set range.
6. Keep pressing port test button before accomplish port test will cause system reboot.

Bug Fix V3.50(LP.1):

1. Process Port Test before VDSL link up will cause system crash.
2. Mirror function cannot work correctly when mirrored port is port 25 and port 26.

Bug Fix V3.50(LP.1)b3:

1. Gray out the edit box of Management VID in port based VLAN mode.
2. Gray out the edit box of VID in Static MAC Forwarding page for port based VLAN mode.
3. Remove one garbage string in port based VLAN table that is in last row and last column.
4. Fix bug that pause timer may overflow problem.
5. Add workaround when READY BIT no response.
6. Fix bug that remote PHY invalid setting may cause traffic hang lock.
7. Change LED light on to blinking when packet into device.

Bug Fix V3.50(LP.1)b2:

1. Port test in Diagnostic menu will fail in port based vlan mode.

Bug Fix V3.50(LP.1)b1:

1. Packet from CPU will flood to other ports in port based vlan.
2. VDSL CPE Ethernet link down will not flush arp table.

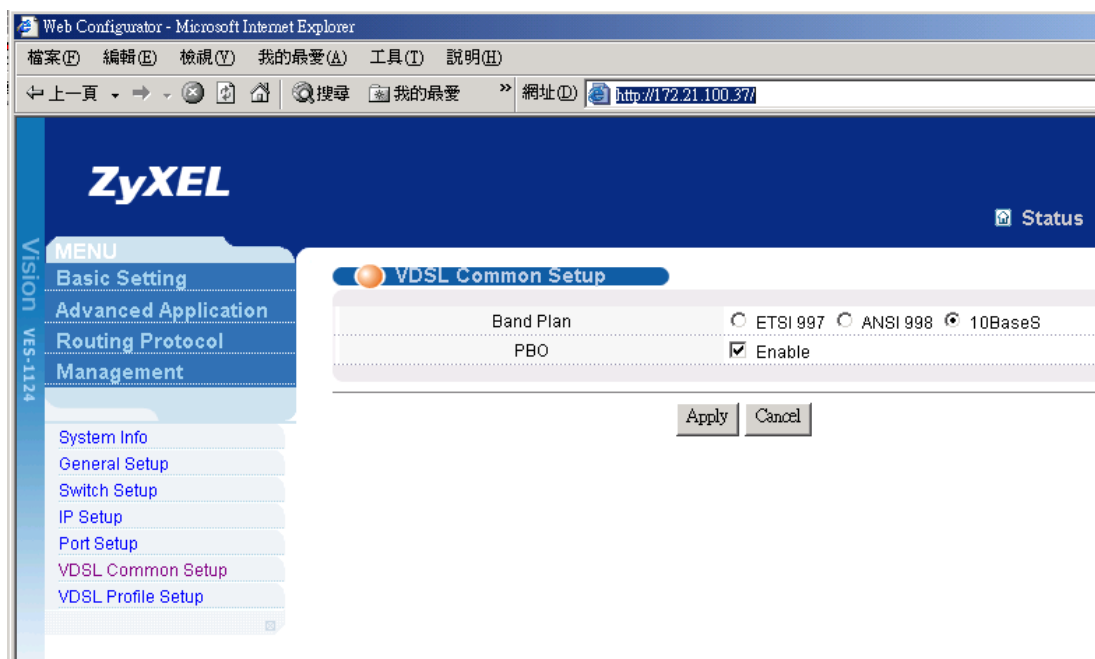
Bug Fix V3.50(LP.0):

1. FTP cannot work correctly.
2. MIB display error.
3. Help Page binding problem.

Features:

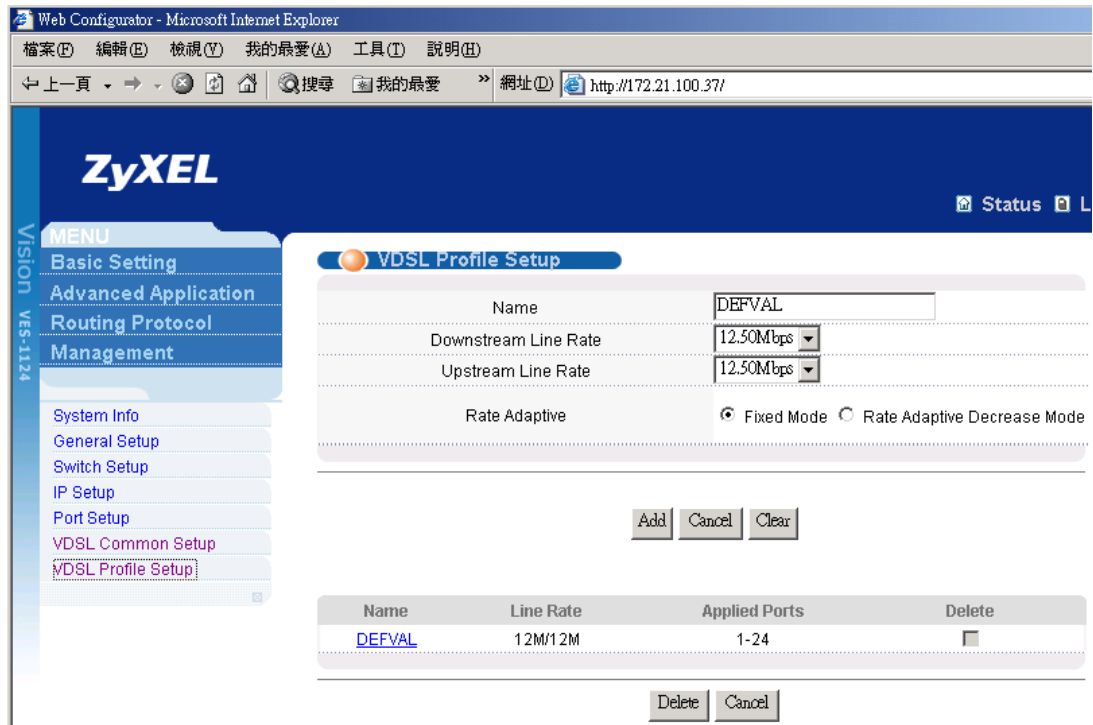
1. VDSL Common Setup

Providing mechanisms for setting VDSL system-wide parameters, including band plans of ETSI 997, ANSI 998, 10BaseS, and Power Back Off (PBO) enable/disable.



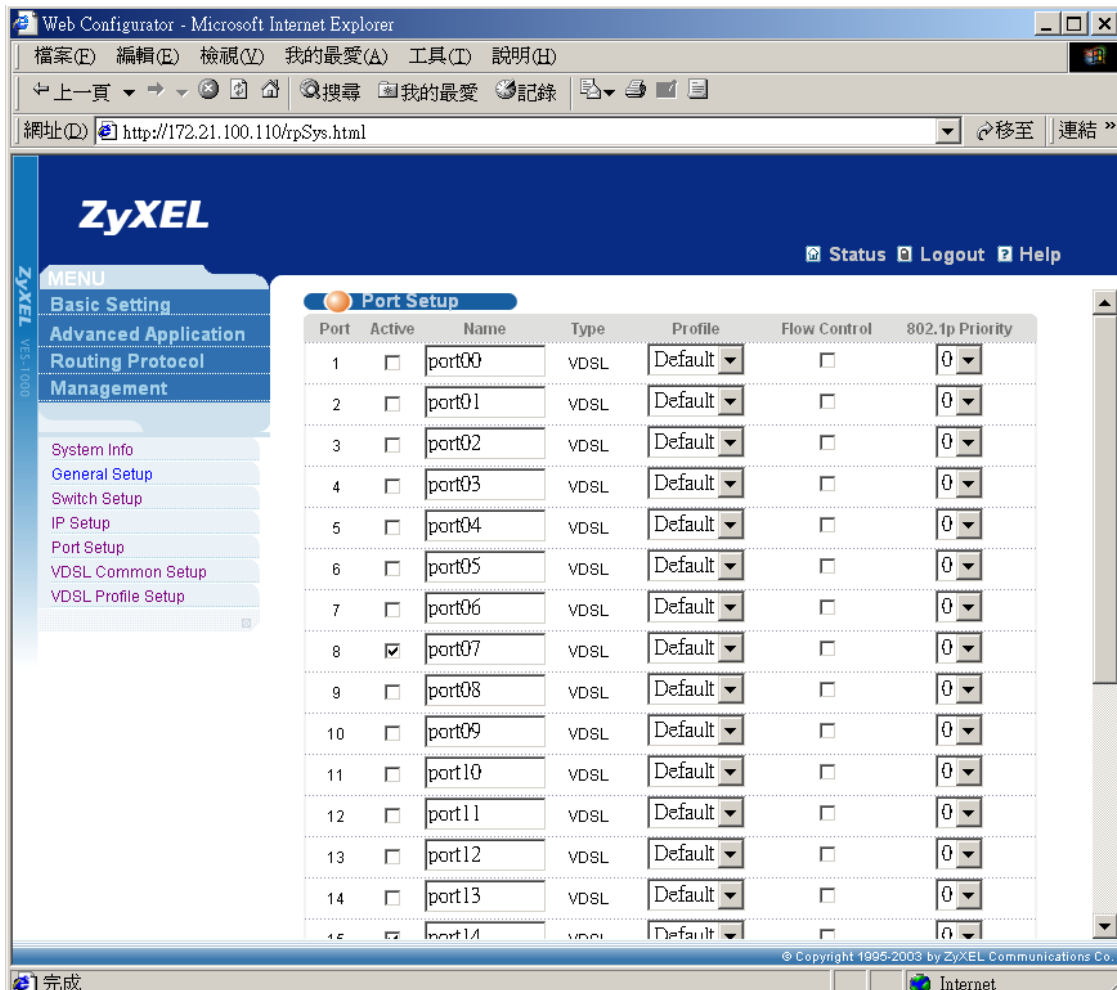
2. VDSL Profile Management:

The profile management is used for creating/modifying/deleting VDSL profiles used by each ports for different VDSL parameters. Currently we provide maximum 24 profiles for all system. One of the profiles named “DEFVAL” is the default profile of the system and can not be deleted. Any changes of the profiles will cause the VDSL port retrain.



3. VDSL Port Profile Assignment

In the Port Setup page, the user can assign which profile to be used for each port.



Firmware Upgrade:

The VES-1124 uses FTP to upgrade firmware in run-time through its built-in FTP server. You can use any FTP client (for example, [ftp.exe](#) in Windows) to upgrade VES-1124. The upgrade procedure is as follows:

Upgrade VES-1124 FW:

```
C:\> ftp <VES-1124 IP address>
User : <Enter>
Password: 1234
230 Logged in
ftp> put 350LP1C0.bin ras
ftp> bye
```

Where

- User name : just press <Enter>
- Password : the management password, 1234 by default

- 350LP1C0.bin : the name of firmware file you want to upgrade
- ras : the internal firmware name in VES-1124

Configuration Upgrade:

The VES-1124 uses FTP to upgrade configuration in run-time through its built-in FTP server. You can use any FTP client (for example, [ftp.exe](#) in Windows) to upgrade VES-1124. The upgrade procedure is as follows:

Upgrade VLC1124A configuration:

```
C:\> ftp <VES-1124 IP address>
User : <Enter>
Password: 1234
230 Logged in
ftp> put 350LP1C0.rom rom-0
ftp> bye
```

Where

- User name : just press <Enter>
- Password : the management password, 1234 by default
- 350LP1C0.rom : the name of configuration file you want to upgrade
- rom-0 : the internal configuration name in VES-1124

Commands Table:

- Partial VDSL Profile and VDSL Port commands are not fully supported

sys

snmp	GetCom	[<community>		Set or view community of
	munity]		GetRequest.
	SetCom	[<community>		Set or view community of
	munity]		SettRequest.
	TrustedH	[<hsot>]		Set or view trusted host.
	ost			
	trapCom	[<community>		Set or view community of Trap
	munity]		
	trapDest	[<destination>		Set or view trap server.
]			
cluster	disp			View snmp setting.
	active	<name>		Active cluster
	inactive	<name>		Inactive cluster
	add	<MAC addr>	<password>	Add a member into cluster
			>	
	remove	<MAC addr>		Remove a member from cluster.
	ShowMe			Show member list
	meber			
	showCan			Show candidate list

	helloTim	<hello time>		Hello timer
	e			
	forwardD	<forward delay		Forward delay time
	elat	time>		
	version	<STP:0 RSTP:2		Operation Mode
		>		
port	enable	<Port_NO>		Enable this port under RSTP protocol
	disable	<Port_NO>		Disable this port under RSTP protocol
	pathCost	<Port_NO>		Cost of this path
	priority	<Port_NO>		Priority
	edgePort	<Port_NO>		If this port is an edge port
	p2pLink	<Port_NO>		Whether the Port concerned can only be connected to exactly one other Bridge or can be connected to two or more Bridges
	mcheck	<Port_NO>		802.1w chapter 17.18.10
lacp				Please reference to 802.3ad
agg				Display aggregation information
port	enable	<Port_NO>		
	disable	<Port_NO>		
	status	<Port_NO>		
	actorAd			Actor means local side
	m			
	activity	[Port_NO [0:passive 1:active]		
]		
	display	[Port_NO		
]		
	key	[Port_NO [Key]		
]		
	priority	[Port_NO [Priority]		
]		
	timeout	[Port_NO [0:long_timeout 1:s		
] hort_timeout]		
	status			
	keymgnt	[on off]		
	sysPriorit	<priority>		
	y			
dot1x				Please reference to 802.1x
	enable			Enable dot1x
	disable			Disable dot1x
	status			Show dot1x global status
	port			
	enable	<Port_NO>		Enable this port
	disable	<Port_NO>		Disable this port
	reauth	<Port_NO>	<on off>	Re-authentication

		reauthPer	<Port_NO>	<value>		Re-authentication period
		iod				
		status	<Port_NO>			Port status
set		auth	<profile radius>			Set authentication method
		portcontrol	<port-no>	<auto auth unauth>		Set port authentication status
radius		server	<IP>			Server IP
		secret	<secret>			Secret key
		port	<port>			Server port
		show				Display server setting (Won't be saved in flash)
profile		add	<username>	<passwd>		Add a user profile
		delete	<idx>			Delete a user profile
		list				List profile setting
class						Class setting
	display					display run-time status
	l2set	<src port>	<src MAC> <src vid>	<dest port>	<dest MAC> <dest vid>	Set src/dest port/MAC combination
	del	<class id>				Delete this class
bmstorm						Broadcast Storm Control
	disable					Clear current run-time settings
	type	<type>				Broadcast/Multicast/Both
	basis	<type>				Pkt/Byte
	display	[index]				Display ports setting
	interval	[value]				Set/display monitor interval
	set	<port>	<dhreshold>	<direction>		Threshold:# of pkt can be passed in the interval Direction:ingress/egress
	del	<index>				Disable on this port
mac	static					Static MAC setting
	disable					Clear current run-time settings
	display	[port]				display run-time status
	set	<port>		<MAC Addr.>	<vid>	Set static MAC of the port
	del	<port>		<MAC Addr.>	<vid>	Delete static MAC of the port
filter						MAC filter setting
	disable					Clear current run-time settings
	display					display run-time status
	set	<src	<src MAC>	<dest	<dest MAC>	Set src/dest port/MAC

	port>	<src vid>	port>	<dest vid>	combination (Use “*” as “don’t-care” in each field)
mirror	disable				Mirror setting Clear current run-time settings display run-time status
	display				Set src/dest port/MAC combination for mirror settings (Use “*” as “don’t-care” in each field)
	set	<src port>	<src MAC> <src vid>	<dest port> <dest MAC> <dest vid>	
		<input/ou tput both >			
	port	<port>			What port mirror to
bw	disable				Bandwidth Control setting Clear current run-time settings display run-time status
	display				Set src/dest port/MAC combination (Use “*” as “don’t-care” in each field)
	set	<src port>	<src MAC> <src vid>	<dest port> <dest MAC> <dest vid> <Max BW>	
trunk	disable				Trunking setting Clear current run-time settings display run-time status
	display				Set trunking group del trunking group
	set	<group>	<# ports>		
	del	<group>			
monit	Set				Set voltage, temperature
or	Status				Show Monitor status
Ip	dhcp	<Iface>	mode	<none client>	Change DHCP mode for interface <Iface>
			status		Show DHCP status
			client	release	Release the IP address
				renew	Renew the IP address.

● Following commands are not fully supported

Profile commands: The following commands are under “**vdsl profile**”

list					List profile
create	<profile name>				Create a new profile with default setting

delete	<profile name>					Delete a profile
apply	<profile name>	<port number all>				Apply current profile setting to other port
display	<profile name>					Display setting of current profile
set	<profile name>	name	<profile name>			Set the profile name of current profile
		uspayloadrate	max			Set the max upstream payloadrate
			min			Set the min upstream payloadrate
		dspayloadrate	max			Set the max downstream payloadrate
			min			Set the min downstream payloadrate
		rate-adaption	fix			Set rate-adaption mode to fixed mode
			adaption			Set rate-adaption mode to adaption mode
		snr	max			Set value of max snr
			min			Set value of min snr
			upstream	target		Set value of upstream target snr
			downstream	target		Set value of downstream target snr
		compatible-mode	adsl			Set to adsl compatible-mode
			pots			Set to pots compatible-mode
		usinterdelay				Set value of upstream interleave delay
		dsinterdelay				Set value of downstream interleave delay
		rft	disable			Set rft to disable
			standard	annex_f		Set rft to annex f standard
				etsi		Set rft to etsi standard
				t1e1		Set rft to t1e1 standard
vdsl	Port	<port number all>	enable			Set the port to line enable
			disable			Set the port to line disable
			retrain			Re-train operation for the port
			Re-provision			Re-provision for the port
			reset			Reset for the port
			remote-reset			Remote-reset CPE for the port
						Send EOC loopback packet for the remote test
			<port number>	remote-test		
			config	Display		Display config setting
			status	Display		Display current status for the port
			counter	Clear		Clear counter for the port
vdsl	bandplan					Set bandplan for vdsl system configuration
	Pbo	Enable				Set PBO to enable
		Disable				Set PBO to disable

MIB support:

The following is the private vdsl related MIB currently supported by VLC-1124A:

- accessSwitchVdslLineTable
- accessSwitchVdslVtuoPhysTable
- accessSwitchVdslVturPhysTable
- accessSwitchVdslVtuoInventoryTable
- accessSwitchVdslVturInventoryTable
- accessSwitchVdslVtuoIntervalTable
- accessSwitchVdslVturIntervalTable
- accessSwitchVdslLineConfProfileTable
- accessSwitchVturDevTable
- accessSwitchVturConfTable
- accessSwitchVturStateTable
- accessSwitchVdslVtuoPhyMCMTTable
- accessSwitchVdslVturPhyMCMTTable

Test Items:

1. VDSL profile create/modify/delete, and assign the profile to the specific VDSL port.
2. VDSL port retrain.
3. Load factory default.
4. IP Setting