

# ZyXEL VES-1124 V3.50(LP.0)

## Release Note/Manual Supplement

---

**Date:** Jun. 10, 2004

This document describes the features in the VES-1124 product for its 3.50(LP.0) release.

### ***Support Platforms:***

---

ZyXEL VES-1124 V3.50(LP.0) supports models: ZyXEL VES-1124

### ***Version:***

---

ZyNOS Version: V3.50(LP.0) | 06/10/2004 15:24:13

BootBase Version: V1.01(VES-1124) | 05/27/2004 17:20:55

### ***Known Issue:***

---

1. Ethernet AC101 PHY are not compatible with specific PHY.
2. Cannot generate pause frame when multiple vdsl ports send packets to uplink port.
3. Bandwidth control works only when Flow control enabled.
4. When GVRP enable, leave timer and leave all timer should be increased when lots of dynamic VLAN join.
5. Per port PVID setting is limited in set range(1-255, 256-511,..., 3840-4094). If port 1 is set PVID in one of the set range, the other ports PVID also should be set to the same set range.
6. Remote loop back test works only in remote LAN link up.

### ***Bug Fix:***

---

1. FTP cannot work correctly.
2. MIB display error.
3. Help Page binding problem.

### ***Features:***

---

#### **1. VDSL Common Setup**

Providing mechanisms for setting VDSL system-wide parameters, including band plans of ETSI 997, ANSI 998, 10BaseS, and Power Back Off (PBO) enable/disable.

Web Configurator - Microsoft Internet Explorer

檔案(F) 編輯(E) 檢視(V) 我的最愛(A) 工具(T) 說明(H)

← 上一頁 → 搜尋 我的最愛 網址(D) http://172.21.100.37/

**ZyXEL** Status

**MENU**

- Basic Setting
- Advanced Application
- Routing Protocol
- Management
- System Info
- General Setup
- Switch Setup
- IP Setup
- Port Setup
- VDSL Common Setup
- VDSL Profile Setup

**VDSL Common Setup**

Band Plan ☐ ETSI 997 ☐ ANSI 998 ☒ 10BaseS

PBO ☒ Enable

Apply Cancel

## 2. VDSL Profile Management:

The profile management is used for creating/modifying/deleting VDSL profiles used by each ports for different VDSL parameters. Currently we provide maximum 24 profiles for all system. One of the profiles named “DEFVAL” is the default profile of the system and can not be deleted. Any changes of the profiles will cause the VDSL port retrain.

Web Configurator - Microsoft Internet Explorer

檔案(F) 編輯(E) 檢視(V) 我的最愛(A) 工具(T) 說明(H)

← 上一頁 → 搜尋 我的最愛 網址(D) http://172.21.100.37/

**ZyXEL** Status

**MENU**

- Basic Setting
- Advanced Application
- Routing Protocol
- Management
- System Info
- General Setup
- Switch Setup
- IP Setup
- Port Setup
- VDSL Common Setup
- VDSL Profile Setup

**VDSL Profile Setup**

Name DEFVAL

Downstream Line Rate 12.50Mbps

Upstream Line Rate 12.50Mbps

Rate Adaptive ☒ Fixed Mode ☐ Rate Adaptive Decrease Mode

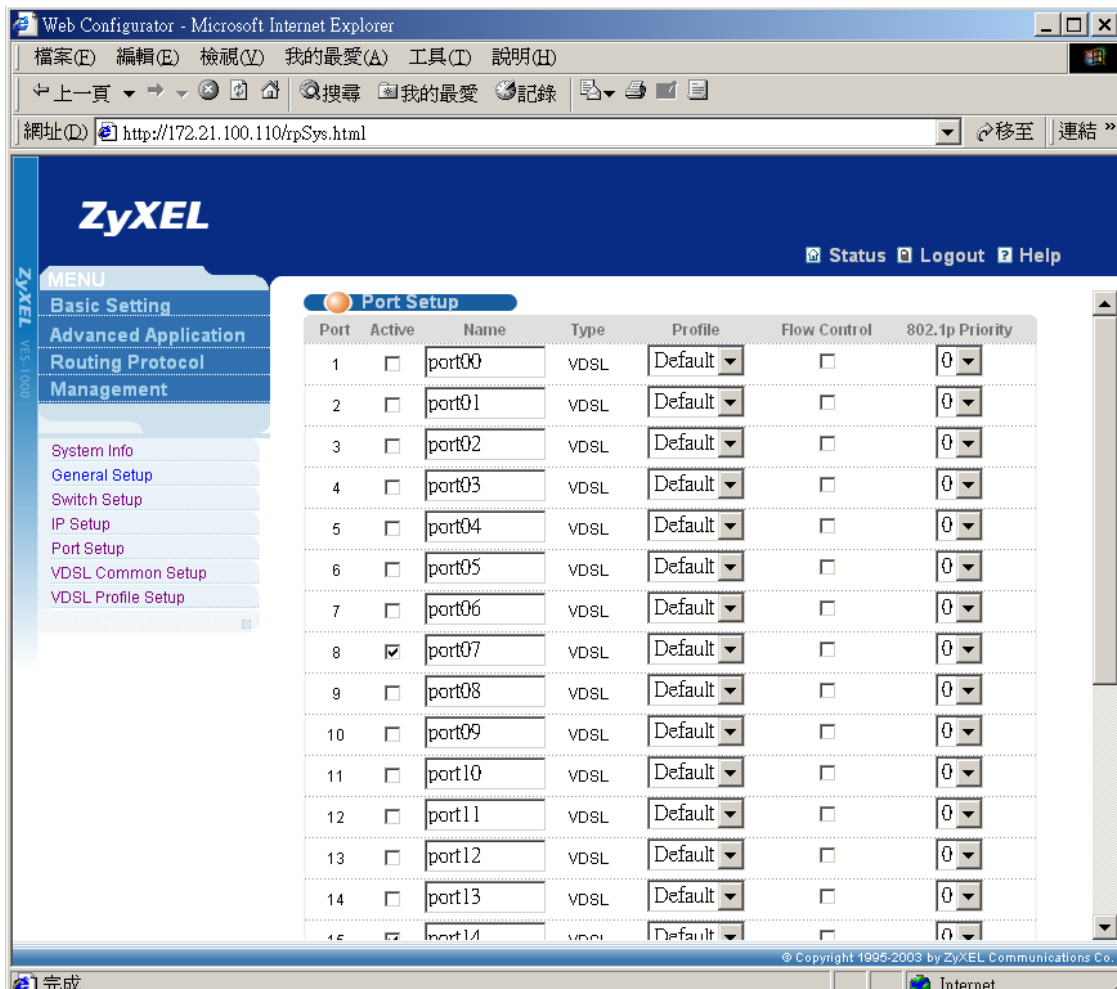
Add Cancel Clear

Name	Line Rate	Applied Ports	Delete
DEFVAL	12M/12M	1-24	<input type="checkbox"/>

Delete Cancel

### 3. VDSL Port Profile Assignment

In the Port Setup page, the user can assign which profile to be used for each port.



### *Firmware Upgrade:*

The VES-1124 uses FTP to upgrade firmware in run-time through its built-in FTP server. You can use any FTP client (for example, [ftp.exe](#) in Windows) to upgrade VES-1124. The upgrade procedure is as follows:

#### Upgrade VES-1124 FW:

```
C:\> ftp <VES-1124 IP address>
User : <Enter>
Password: 1234
230 Logged in
ftp> put 350LP0.bin ras
ftp> bye
```

Where

- User name : just press <Enter>
- Password : the management password, 1234 by default
- 350LP0.bin : the name of firmware file you want to upgrade
- ras : the internal firmware name in VES-1124

### ***Configuration Upgrade:***

---

The VES-1124 uses FTP to upgrade configuration in run-time through its built-in FTP server. You can use any FTP client (for example, [ftp.exe](#) in Windows) to upgrade VES-1124. The upgrade procedure is as follows:

#### **Upgrade VLC1124A configuration:**

```
C:\> ftp <VES-1124 IP address>
User : <Enter>
Password: 1234
230 Logged in
ftp> put 350LP0.rom rom-0
ftp> bye
```

Where

- User name : just press <Enter>
- Password : the management password, 1234 by default
- 350LP0.rom : the name of configuration file you want to upgrade
- rom-0 : the internal configuration name in VES-1124

### ***Commands Table:***

---

- Partial VDSL Profile and VDSL Port commands are not fully supported

sys

snmp	GetCom	[<community>		Set or view community of
	munity	]		GetRequest.
	SetCom	[<community>		Set or view community of
	munity	]		SetRequest.
	TrustedH	[<hsot>]		Set or view trusted host.
	ost			
	trapCom	[<community>		Set or view community of Trap
	munity	]		
	trapDest	[<destination>		Set or view trap server.
	]			
cluster	disp			View snmp setting.
	active	<name>		Active cluster
	inactive	<name>		Inactive cluster
	add	<MAC addr>	<password>	Add a member into cluster
			>	
	remove	<MAC addr>		Remove a member from cluster.
	ShowMe			Show member list



	priority	<priority>	System Priority
	maxAge	<max age>	Max age timer
	helloTim	<hello time>	Hello timer
	e		
	forwardD	<forward delay	Forward delay time
	elat	time>	
	version	<STP:0 RSTP:2	Operation Mode
		>	
port	enable	<Port_NO>	Enable this port under RSTP protocol
	disable	<Port_NO>	Disable this port under RSTP protocol
	pathCost	<Port_NO>	Cost of this path
	priority	<Port_NO>	Priority
	edgePort	<Port_NO>	If this port is an edge port
	p2pLink	<Port_NO>	Whether the Port concerned can only be connected to exactly one other Bridge or can be connected to two or more Bridges
	mcheck	<Port_NO>	802.1w chapter 17.18.10
lacp			<a href="#">Please reference to 802.3ad</a>
agg			Display aggregation information
port	enable	<Port_NO>	
	disable	<Port_NO>	
	status	<Port_NO>	
	actorAd		Actor means local side
	m		
	activity	[Port_NO [0:passive 1:active]	
		]	
	display	[Port_NO	
		]	
	key	[Port_NO [Key]	
		]	
	priority	[Port_NO [Priority]	
		]	
	timeout	[Port_NO [0:long_timeout 1:s	
		hort_timeout]	
	status		
	keymgnt	[on off]	
	sysPriorit	<priority>	
	y		
dot1x			<a href="#">Please reference to 802.1x</a>
	enable		Enable dot1x
	disable		Disable dot1x
	status		Show dot1x global status
	port		
	enable	<Port_NO>	Enable this port

	disable	<Port_NO>			Disable this port
	reauth	<Port_NO>	<on off>		Re-authentication
	reauthPeriod	<Port_NO>	<value>		Re-authentication period
	status	<Port_NO>			Port status
set	auth	<profile   radius>			Set authentication method
	portcontrol	<port-no>	<auto  auth   unauth>		Set port authentication status
radius	server	<IP>			Server IP
	secret	<secret>			Secret key
	port	<port>			Server port
	show				Display server setting (Won't be saved in flash)
profile	add	<username>	<passwd>		Add a user profile
	delete	<idx>			Delete a user profile
	list				List profile setting
class	display				Class setting
	l2set	<src port>	<src MAC>	<dest port>	display run-time status
		<src vid>		<dest MAC>	Set src/dest port/MAC combination
	del	<class id>		<dest vid>	Delete this class
bmstorm	disable				Broadcast Storm Control
	type	<type>			Clear current run-time settings
	basis	<type>			Broadcast/Multicast/Both Pkt/Byte
	display	[index]			Display ports setting
	interval	[value]			Set/display monitor interval
	set	<port>	<dhreshold>	<direction>	Threshold:# of pkt can be passed in the interval
	del	<index>			Direction:ingress/egress
					Disable on this port
mac	static				Static MAC setting
	disable				Clear current run-time settings
	display	[port]			display run-time status
	set	<port>	<MAC Addr.>	<vid>	Set static MAC of the port
	del	<port>	<MAC Addr.>	<vid>	Delete static MAC of the port
filter	disable				MAC filter setting
					Clear current run-time settings

	display					display run-time status
	set	<src port>	<src MAC> <src vid>	<dest port>	<dest MAC> <dest vid>	Set src/dest port/MAC combination ( Use “*” as “don’t-care” in each field)
mirror						
	disable					Mirror setting Clear current run-time settings
	display					display run-time status
	set	<src port>	<src MAC> <src vid>	<dest port>	<dest MAC> <dest vid>	Set src/dest port/MAC combination for mirror settings ( Use “*” as “don’t-care” in each field)
		<input/output/both>				
	port	<port>				What port mirror to
bw						
	disable					Bandwidth Control setting Clear current run-time settings
	display					display run-time status
	set	<src port>	<src MAC> <src vid>	<dest port>	<dest MAC> <dest vid> <Max BW>	Set src/dest port/MAC combination ( Use “*” as “don’t-care” in each field)
trunk						
	disable					Trunking setting Clear current run-time settings
	display					display run-time status
	set	<group>	<# ports>			Set trunking group
	del	<group>				del trunking group
monit	Set					Set voltage, temperature
or	Status					Show Monitor status
Ip	dhcp	<Iface>	mode	<none   client>		Change DHCP mode for interface <Iface>
			status			Show DHCP status
			client	release		Release the IP address
				renew		Renew the IP address.

● Following commands are not fully supported

Profile commands: The following commands are under “**vdsi profile**”

list	List profile
------	--------------



create	<profile name>				Create a new profile with default setting
delete	<profile name>				Delete a profile
apply	<profile name>	<port number   all>			Apply current profile setting to other port
display	<profile name>				Display setting of current profile
set	<profile name>	name	<profile name>		Set the profile name of current profile
		uspayloadrate	max		Set the max upstream payloadrate
			min		Set the min upstream payloadrate
		dspayloadrate	max		Set the max downstream payloadrate
			min		Set the min downstream payloadrate
		rate-adaption	fix		Set rate-adaption mode to fixed mode
			adaption		Set rate-adaption mode to adaption mode
		snr	max		Set value of max snr
			min		Set value of min snr
			upstream	target	Set value of upstream target snr
			downstream	target	Set value of downstream target snr
		compatible-mode	adsl		Set to adsl compatible-mode
			pots		Set to pots compatible-mode
		usinterdelay			Set value of upstream interleave delay
		dsinterdelay			Set value of downstream interleave delay
		rft	disable		Set rft to disable
			standard	annex_f	Set rft to annex f standard
				etsi	Set rft to etsi standard
				t1e1	Set rft to t1e1 standard
vdsl	Port	<port number   all>	enable		Set the port to line enable
			disable		Set the port to line disable
			retrain		Re-train operation for the port
			Re-provision		Re-provision for the port
			reset		Reset for the port
			remote-reset		Remote-reset CPE for the port
		<port number>	remote-test		Send EOC loopback packet for the remote test
			config	Display	Display config setting
			status	Display	Display current status for the port
			counter	Clear	Clear counter for the port
vdsl	bandplan				Set bandplan for vdsl system configuration

Pbo	Enable	Set PBO to enable
	Disable	Set PBO to disable

---

### ***MIB support:***

The following is the private vdsl related MIB currently supported by VLC-1124A:

- accessSwitchVdslLineTable
- accessSwitchVdslVtuoPhysTable
- accessSwitchVdslVturPhysTable
- accessSwitchVdslVtuoInventoryTable
- accessSwitchVdslVturInventoryTable
- accessSwitchVdslVtuoIntervalTable
- accessSwitchVdslVturIntervalTable
- accessSwitchVdslLineConfProfileTable
- accessSwitchVturDevTable
- accessSwitchVturConfTable
- accessSwitchVturStateTable
- accessSwitchVdslVtuoPhyMCMTTable
- accessSwitchVdslVturPhyMCMTTable

---

### ***Test Items:***

1. VDSL profile create/modify/delete, and assign the profile to the specific VDSL port.
2. VDSL port retrain.
3. Load factory default.
4. IP Setting