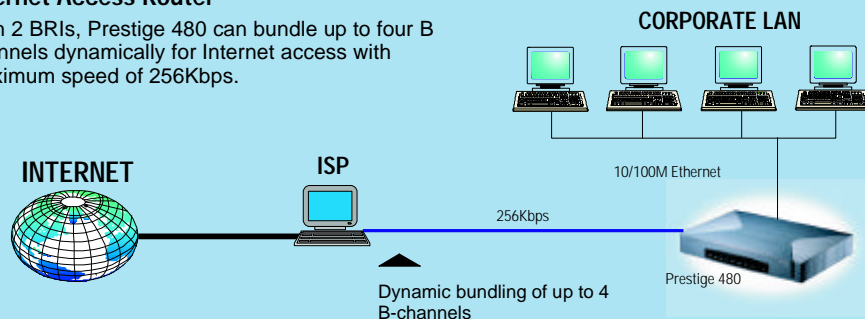


Prestige 480

Dual BRI ISDN Access Router Applications

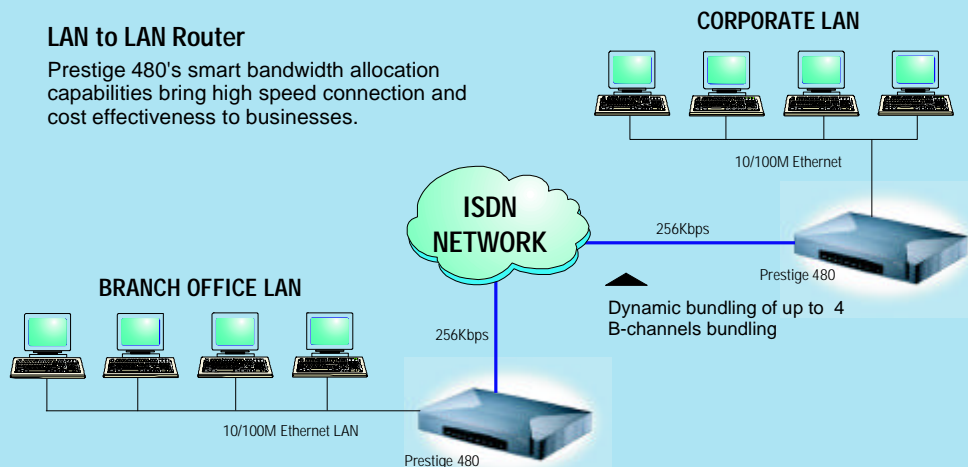
Internet Access Router

With 2 BRIs, Prestige 480 can bundle up to four B channels dynamically for Internet access with maximum speed of 256Kbps.



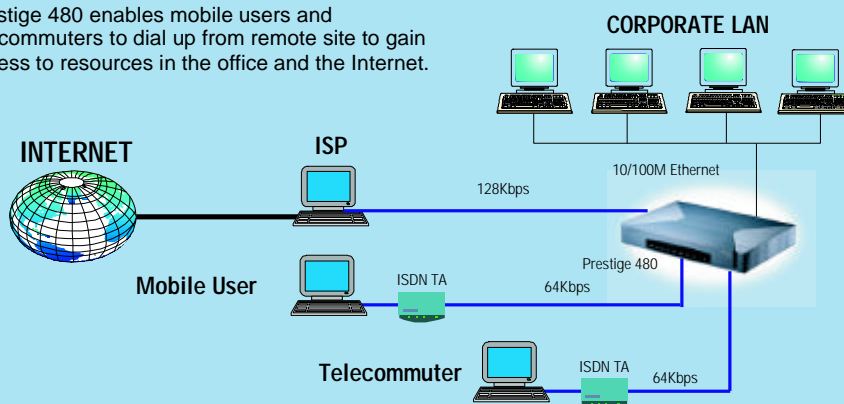
LAN to LAN Router

Prestige 480's smart bandwidth allocation capabilities bring high speed connection and cost effectiveness to businesses.



Remote Access Server

Prestige 480 enables mobile users and telecommuters to dial up from remote site to gain access to resources in the office and the Internet.



This product is based on ZyNOS™ platform with firmware upgradability.

Specifications are subject to change without notice.

All trademarks are the property of their respective owners.

ZyXEL

TOTAL INTERNET ACCESS SOLUTION

International:
ZyXEL Communications Corp.
Tel: 886-3-5783942
Fax: 886-3-5782439
E-mail: sales@zyxel.com.tw
Web: http://www.zyxel.com

North America:
ZyXEL Communications, Inc.
Tel: 714-632-0882
Fax: 714-632-0858
E-mail: sales@zyxel.com
support@zyxel.com
Web: http://www.zyxel.com

Scandinavia:
ZyXEL Communications A/S
Tel: 45-3955-0700
Fax: 45-3955-0707
E-mail: sales@zyxel.dk
support@zyxel.dk
Web: http://www.zyxel.dk

Germany:
ZyXEL Deutschland GmbH.
Tel: +49-2405-6909-0
Fax: +49-2405-6909-99
E-mail: sales@zyxel.de
support@zyxel.de
Web: http://www.zyxel.de

Prestige 480

Dual BRI ISDN Access Router



A dual BRI router has never been faster or more cost-effective for various network applications, such as Internet Access, LAN-to-LAN connection and remote access services. ZyXEL's Prestige 480's two BRI's supports 4 connections simultaneously in any incoming/outgoing combination. Together with auto-sensing 10/100Mbps Ethernet interface, the Prestige 480 is ideally suited as a Internet Access router and dial-in server for a small/medium business.

ISDN Network Compatibility

- Dual ISDN BRI (Basic Rate Interface)
- Standard S/T interface
- For Europe and Asia: Supports DSS1*
- ISDN leased line capability from 64Kbps to 256Kbps transmission rate

Internet Access

- Nailed-up connection to simulate leased line functionality
- Dial-on-Demand
- Bandwidth-on-Demand allocates bandwidth when needed.
- SUA(Single User Account)/NAT(Network Address Translation) enables multiple workstations on the LAN to access the Internet for the cost of a single ISP account.
- Hi/fr®(Stac®LZS) compression and compression control protocol support
- DNS Proxy supports IPCP (IP Control Protocol) extension to get DNS (Domain Name System) server addresses and reply automatically to client DNS requests.
- PPP(Point-to-Point protocol)/MP(Multilink Protocol) allows bundling of up to four B-channels for maximum speed of 256Kbps.
- BACP/BAP support manages the number of links in multilink bundles.

Network Protocols

- IP and IPX** multi-protocol routing
- Transparent bridging**
- 10M/100M auto-sensing Fast Ethernet LAN connection
- RIP-2 support
- PPTP Virtual Private Network over SUA/NAT
- "Spoofing" saves WAN cost and reduce traffic load**
- Compatible with Ascend, Cisco and other routers

Remote Access Server.

- Dial-up support for network access via ISDN
- Simultaneous connections from up to four different locations
- Remote users can run Windows 95/98/NT or any PPP package.

Network Management

- Windows-based configurator software for quick configuration
- Menu driven user interface for easy network management
- Local and remote console management
- TFTP(Trivial File Transfer Protocol) firmware upgrade and configuration backup and restore
- DHCP(Dynamic Host Configuration Protocol) server automatically assigns IP addresses to Windows 95/98/NT and other systems that support DHCP client.
- Integrated SNMP support for managing complex networks from remote sites
- Call Detail Records feature provides efficient tracking of incoming and outgoing calls.
- Call Control Management: Blacklist, Call Budget, and Call History
- RADIUS accounting offers user log on and off information

Robust Security Features

- PAP (Password Authentication Protocol)
- CHAP(Challenge Handshake Authentication Protocol)
- Microsoft CHAP
- CLID(Calling Line Identification) support
- Call-Back with password protection
- Firewall Filtering for controlled access to and from your network
- RADIUS support for centralized management of dial-in users database

Physical Interfaces

- Two RJ-45 ports for ISDN connection
- One RJ-45 port for 10M/100M Ethernet LAN connection
- One DB-9 RS-232 port for local configuration and management

* Prior to purchase, please contact your local dealer/distributor for the correct version to ensure compatibility with the ISDN switches in your area.

** Future feature