

NetAtlas Workgroup

Ethernet Switch Manager

Quick Start Guide

Version 1.02

Edition 1

3/2006

The logo for ZyXEL, featuring the word "ZyXEL" in a bold, blue, sans-serif font. The "Zy" is in a lighter blue, and "XEL" is in a darker blue. The letters are slightly italicized.

1 Introduction

The NetAtlas Workgroup Ethernet Switch Manager is an Element Management System (EMS) that retrieves management information from switches using the SNMP protocol. The EMS allows you to manage multiple switches from a central location.

This guide shows you how to install NetAtlas Workgroup. Refer to the user's guide for background and configuration information.

2 Minimum System Requirements

- CPU: Intel Pentium 4, 1.6 GHz or faster
- Memory (RAM): 1 GB or more
- Hard Disk free space: 20 GB or more
- Screen Resolution: 1024 x 768 pixels
- Ethernet Adaptor: 10/100 Mbps
- Operating System (using NTFS file system): Windows 2000 (with service pack 1), Windows XP or Windows Server 2003.
- Database Program: PostgreSQL 8.0.
- Castle Rock's SNMPc 6.

2.1 Installation Overview

The following gives an overview of what you need to do to install the EMS:

- 1 Install NetAtlas Workgroup.

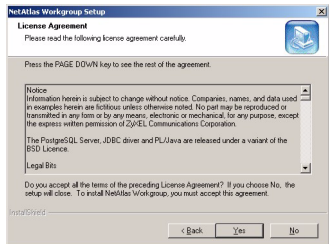
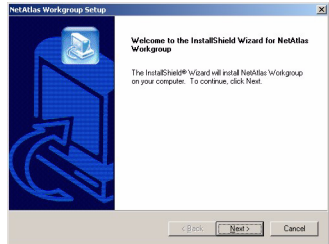
Note: The installation program will install or upgrade PostgreSQL and SNMPc if they are not installed or are of an older version than the minimum requirement.

- 2 Add custom MIB files in SNMPc.
- 3 Locate device(s) that you want the EMS to manage.
- 4 If required, configure the ODBC (Open DataBase Connectivity) driver to connect to the database.

3 Installation

Follow the steps below to install the EMS on a computer.

- 1 Find and double-click **NetAtlasWorkgroup_S102.exe** on the installation CD.
- 2 A **Welcome** screen displays. Click **Next** to continue.
- 3 Read the license agreement. Click **Yes** to accept the agreement.

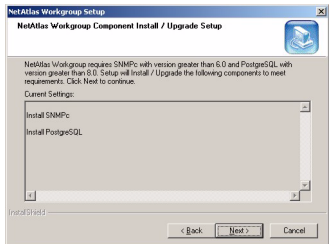


- 4 A screen displays indicating whether SNMPc or PostgreSQL installation/upgrade is required. Click **Next**.

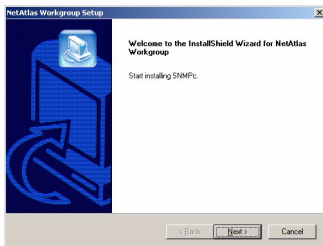
If you need to install/upgrade SNMPc, you see the screen as shown in [Step 5](#).

If you need to install/upgrade PostgreSQL, you see the screen as shown in [Step 12](#).

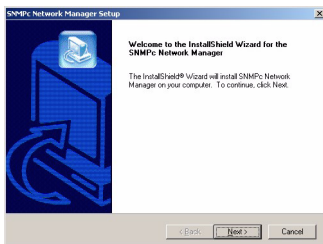
Otherwise, you see the screen as shown in [Step 16](#).



- 5 A screen displays. Click **Next** to proceed to install/upgrade SNMPc.

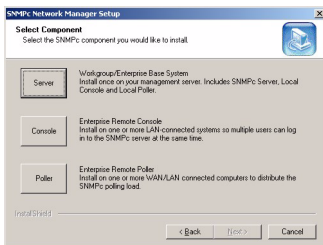


- 6 Click **Next** to continue.



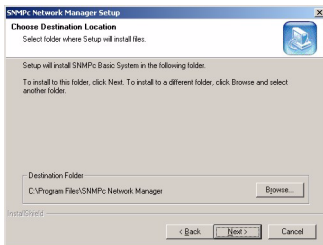
- 7 In the next screen, click an icon to install the EMS server or remote client.

If this is the first time you install EMS, install the **Server** version.

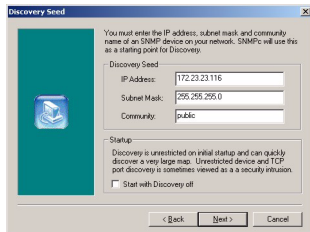


- 8 Accept the default file directory or click **Browse** to specify a new location.

Click **Next** to continue.



- 9** You can set the SNMPc to automatically locate your ZyXEL switch(es). Specify the IP address, subnet mask and community (or password) of a device as the starting point. Make sure the IP address and subnet mask of this device and your ZyXEL switch are in the same range.

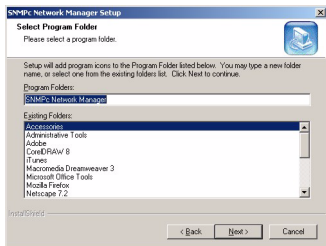


Select **Start with Discovery Off** to manually add a ZyXEL switch.

Click **Next** to continue.

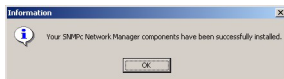
- 10** Accept the default or specify a program folder/name.

Click **Next** to start the installation.



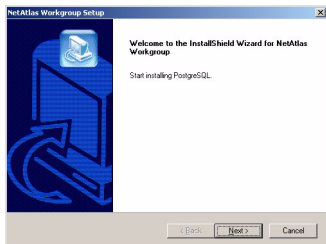
- 11** This screen displays when the installation/upgrade process is successful.

Click **OK**.



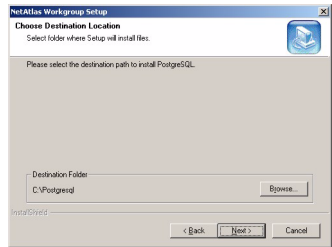
If you need to install/upgrade PostgreSQL, you see the screen as shown in [Step 12](#). Otherwise, you see the screen as shown in [Step 16](#).

- 12** Click **Next** to install/upgrade PostgreSQL.



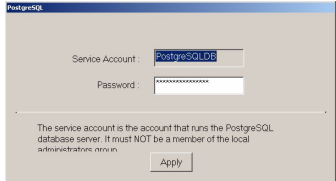
- 13** Accept the default file directory or click **Browse** to specify a new location.

Click **Next** to continue.



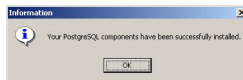
- 14** Accept the default or specify the account user name and password that allows the PostgreSQL to run on your computer.

The default account user name is PostgreSQLDB and password is PostgreSQL1234.

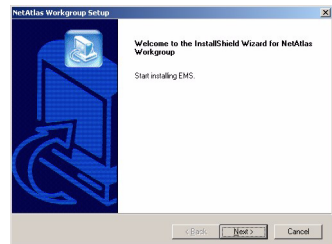


Note: This is **NOT** a Windows login account. The account user name and password are case-sensitive.

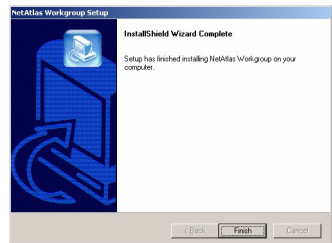
- 15** This screen displays when the installation/upgrade process is successful. Click **OK**.



- 16** Click **Next** to start installing the EMS.



- 17** When the installation process is complete, a screen displays as shown. Click **Finish**.



- OSPF-MIB.mib
- zyxel-es3124.mib
- zyxel-es3124pwr.mib.
- zyxel-es2024a.mib
- zyxel-gs2024.mib
- zyxel-gs4024.mib
- zyxel-gs4012f.mib
- zyxel-es2108.mib
- zyxel-es2108g.mib

4 Click **OK**.

5 Click **Compile** in the **Compile Mibs** screen.

6 Click **Yes** when asked to confirm, then click **OK**.



7 Finally click **Done** in the **Compile Mibs** screen.

6 Finding your Switch

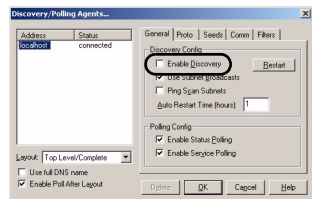
The SNMPc Network Manager can find new devices automatically using auto-discovery (enabled by default) or you will have to add device(s) manually.

6.1 Device Auto-Discovery

1 To enable auto-discovery and then find your device, click **Config, Discovery/Polling**.

2 Select the **Enable Discovery** check box and click **OK**.

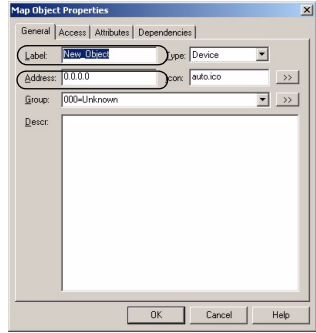
3 Find your device in the **Device List** panel. Double-click the device icon to access the EMS.



6.2 Add Device(s) Manually

If you have disabled auto-discovery, follow the steps below to add your device(s) manually.

- 1 Click **Insert, MAP Object, Device**.
- 2 In the **MAP Object Properties** screen, enter a descriptive device name and IP address for the device and then click **OK**.

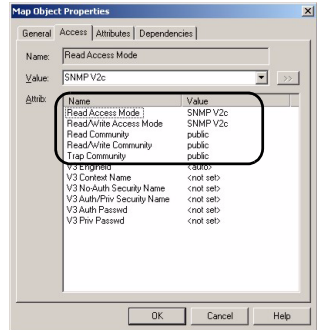


7 Using SNMP

Check that you are using SNMP Version 2c (SNMPv2c). If you are not using SNMPv2c, you must uninstall any previous versions and install SNMPv2c. Refer to *RFC 1901* for more information on SNMPv2c. Follow this procedure to use SNMPv2c.

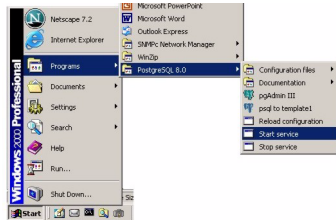
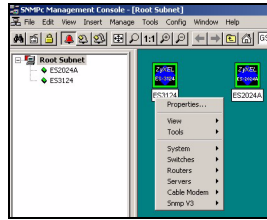
- 1 Right-click the **Device** icon and select **Properties**.
- 2 Click the **Access** tab.
- 3 Set the specified fields in the **Map Object Properties** screen exactly as shown in the figure.

Note: For security purposes, it is strongly recommend to change the **Read Community** and **Read/Write Community** defaults.



Write down this information in a secure place so you will not forget it later.

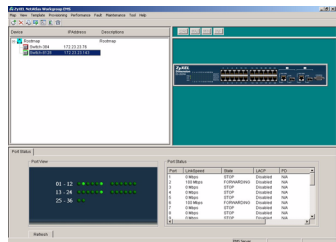
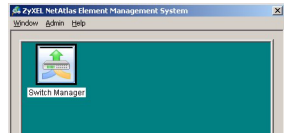
- 4 Click **OK**. After the device has been found, the icon and label appear in the network manager view window.
- 5 Right-click on the device icon to view a set of SNMPc network manager shortcuts. Click **Properties** to verify the information you entered in the previous step.
- 6 Make sure the PostgreSQL database is running. PostgreSQL should start automatically when you start Windows. If it does not, click **Start** (or **start**), **Programs**, **PostgreSQL 8.0** and then click **Start service**.



8 Accessing the EMS

Follow the steps below to access the EMS.

- 1 In the SNMPc main screen, double-click the device icon to display the **Switch Manager**.
- 2 A screen displays. Click the **Switch Manager** icon to display the main EMS configuration screen.



9 Troubleshooting

- 1 SNMPc, EMS and/or PostgreSQL will not install properly
 - Make sure that the computer on which you want to install the SNMPc, EMS and PostgreSQL meets the minimum hardware and software requirements. Refer to [Section 2 on page 2](#).

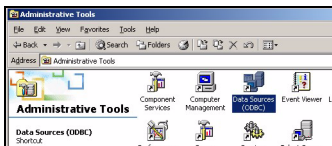
- Before installing PostgreSQL, make sure your computer is using the NTFS file system. To check your computer's file system, right-click on a drive in Windows Explorer and click **Properties**.
 - Shut down any running services or applications which may affect the installation.
 - Remove any previous versions of PostgreSQL and SNMP software from your computer.
 - Re-install SNMPc, PostgreSQL and EMS in that order.
- 2 I cannot find my device in the SNMPc Management screen.
- Check that you have added and compiled the MIBs correctly (see [Section 5 on page 7](#)). Make sure these instructions are followed exactly.
 - Check that you have enabled auto-discovery; see [Section 4 on page 7](#).
 - Check that the map object properties are correct for initial installation; see [Section 6.2 on page 9](#). Make sure the IP address entered is the IP address of the switch you want to manage via the EMS.
 - Check that the ODBC driver is correctly configured; see [Section 9.1 on page 11](#).
 - Make sure that PostgreSQL is running.
 - Make sure that the computer on which you have installed the EMS is connected to the network where the switch is located.
 - Make sure the ZyXEL switch is turned on.
 - Make sure the ZyXEL switch is on the same subnet as your computer.
 - Make sure your computer's Ethernet card is working properly.
 - If the problem still persists, uninstall and re-install the EMS.

9.1 Configuring the ODBC Driver

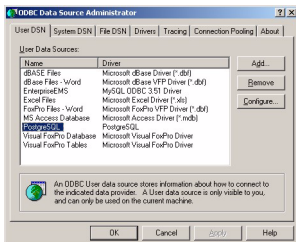
The ODBC driver should already be installed during the NetAtlas Workshop installation process. If you have changed the default ODBC settings, make sure you configure the ODBC driver for the EMS to connect to the PostgreSQL database successfully.

Follow the steps below to configure the ODBC driver in Windows 2000. Steps are similar for other supported Windows operating systems.

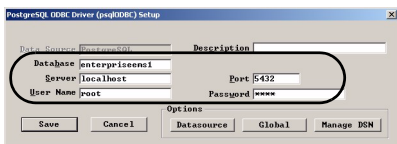
1 Click **Start, Settings and Control Panel** to open the **Control Panel** screen. Double-click **Administrative Tools**.



2 Double-click **Data Source (ODBC)**.
 3 A screen displays as shown. In the **User DSN** screen, select **PostgreSQL** and click **Configure**.



4 The **PostgreSQL ODBC Driver Setup** screen displays. Configure the fields exactly as listed in the table below.



Field	Value
Database	enterpriseems1
Server	localhost
Port	5432
User Name	root
Password	1234

Note: The field values are case-sensitive.

5 Click **Save** to save the changes and close this screen.