

NetAtlas Enterprise

Ethernet Switch Manager

Quick Start Guide

Version 1.03

Edition 1

1/2007

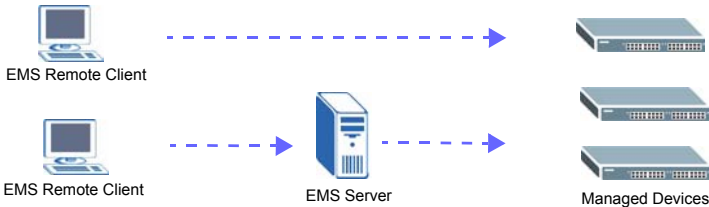
The logo for ZyXEL, featuring the word "ZyXEL" in a bold, blue, sans-serif font. The "Zy" is in a lighter blue, and "XEL" is in a darker blue. The letters are slightly italicized.

1 Introduction

The NetAtlas Enterprise Ethernet Switch Manager is an Element Management System (EMS) that retrieves management information from switches using the SNMP protocol. The EMS allows you to manage multiple switches from a central location.

The EMS consists of two components: the EMS server and the EMS remote client. You must install the EMS server, which includes the database and provides all the functions to use the EMS. You can install the EMS remote client on other computers if you want to use EMS on them as well.

You can send SNMP messages to managed devices from an EMS remote client or through the EMS server. All information is stored in the database on the EMS server.



2 Minimum System Requirements

- CPU: Intel Pentium 4, 1.6 GHz or faster
- Memory (RAM): 1 GB or more
- Hard Disk free space: 20 GB or more
- Screen Resolution: 1024 x 768 pixels
- Ethernet Adaptor: 10/100 Mbps
- Operating System (using NTFS file system): Windows 2000 (service pack 1), Windows Professional, Windows XP or Windows Server 2003.
- Database Program: PostgreSQL 8.0.
- Castle Rock's SNMPc Network Manager 7.0.14.

2.1 Installation Overview

The following gives an overview of what you need to do to install the EMS:

- 1 Install SNMPc Network Manager.
- 2 Install EMS server.

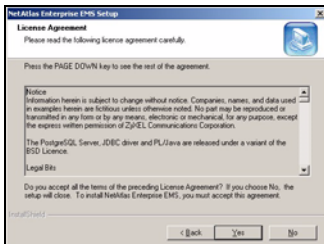
Note: The installation program prompts you to uninstall a previous EMS version. It will also perform a new PostgreSQL installation or upgrade.

- 3 Compile MIBs.
- 4 Add device(s) that you want the EMS to manage.
- 5 If required, configure the ODBC (Open DataBase Connectivity) driver to connect to the EMS database.
- 6 (Optional) Install EMS remote client on other computers.

3 Install EMS Server

Follow the steps below to install the EMS server on a computer.

- 1 Find and double-click **NetAtlasEnterprise_S103.exe** on the installation CD.
- 2 If prompted, uninstall a previous EMS version.
- 3 A **Welcome** screen displays. Click **Next** in each screen to continue.
- 4 Read the license agreement. Click **Yes** to accept the agreement.



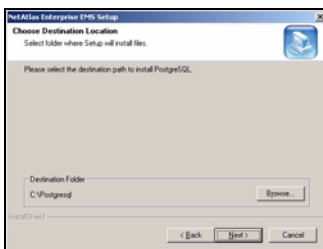
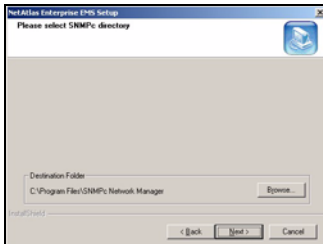
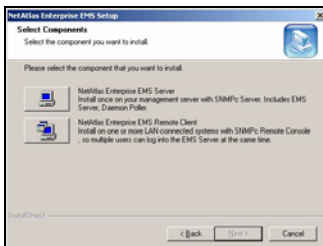
5 Click NetAtlas Enterprise EMS Server to install the server edition.

A warning screen displays if SNMPc is not installed on the computer. In this case, install SNMPc first before you continue.

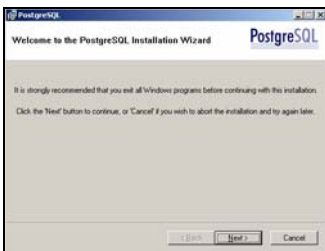
6 Specify where you have installed SNMPc. Accept the default file directory or click **Browse** to specify a new location.

7 If PostgreSQL installation or upgrade is required, click **Next** and continue to [Step 8](#). Otherwise, skip to [Step 18](#).

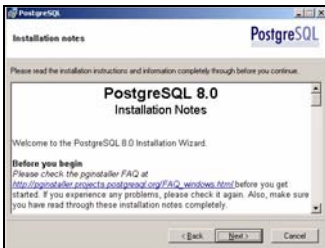
8 Specify where you want to install PostgreSQL. Accept the default file directory or click **Browse** to specify a new location.



9 Click **Next** to continue.



10 Read the license agreements and click **Next** to continue.

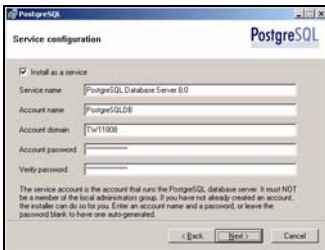


11 Specify the installation options. Make sure you install in the same file location as specified in [Step 8](#).

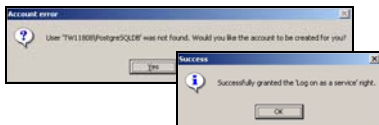


12 Accept the default or specify the account user name and password that allows the PostgreSQL to run on your computer. The default password is "PostgreSQLDB".

Note: This is **NOT** a Windows login account. The account user name and password are case-sensitive.



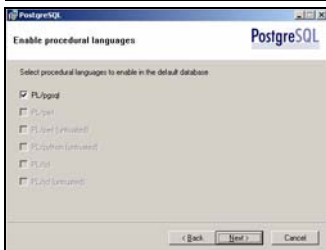
13 Click **Yes** to create a new account and then click **OK** to continue.



14 Specify the database cluster settings and create the administrator (root) account.

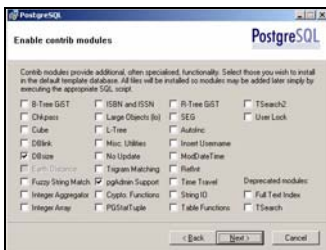


15 Accept the default setting and click **Next** to continue.

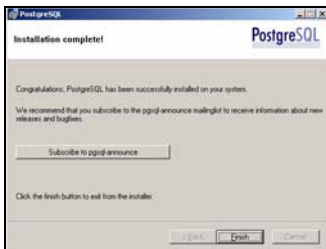


16 Select additional function(s) for the database.

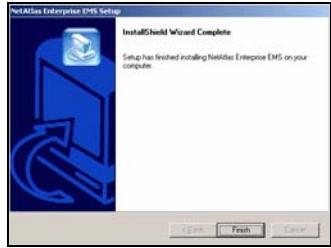
Note: Do NOT clear the **DBsize** or **pgAdmin Support** option.



17 Click **Finish** to complete the PostgreSQL installation.



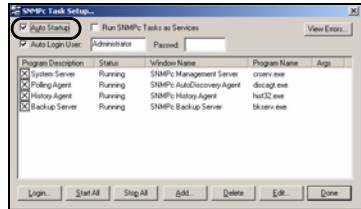
- 18 When the EMS installation process is complete, a screen displays as shown. Click **Finish**.



4 SNMPc Network Manager Startup

To start the SNMPc Network Manager manually, use the Windows **Start** menu.

To start SNMPc automatically each time you turn on your computer, click **Config, System Startup**, select **Auto Startup** and then click **OK**.

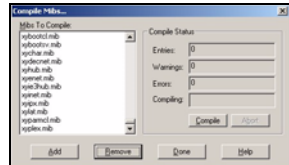


Conversely, clear this check box if you do not wish SNMPc to automatically start each time you turn on your computer.

5 Compile MIBs

Management Information Base (MIB) is designed for holding management information on systems. ZyXEL private MIBs contains information for devices that the standard MIB does not include. During the EMS installation, ZyXEL private MIBs are automatically added into the SNMPc MIB database.

- 1 From the SNMPc Network Manager main screen, click **Config, MIB Database**.
- 2 Click **Compile** in the **Compile Mibs** screen.
- 3 Click **Yes** when asked to confirm, then click **OK**.
- 4 Finally click **Done** in the **Compile Mibs** screen.

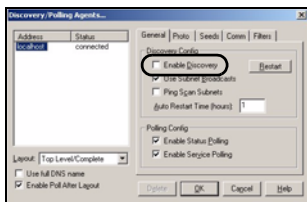


6 Add Your Device

The SNMPc Network Manager is able to find new devices automatically using auto-discovery (enabled by default) or you can add device(s) manually.

6.1 Device Auto-Discovery

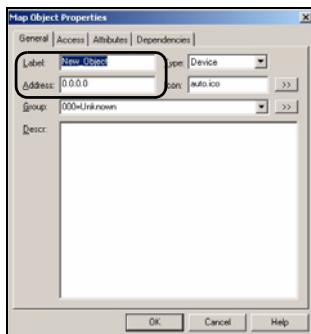
- 1 To enable auto-discovery and then find your device, click **Config, Discovery/Polling**.
- 2 Select the **Enable Discovery** check box and click **OK**.
- 3 Find your device in the **Device List** panel. Double-click the device icon to access the EMS.



6.2 Add Device(s) Manually

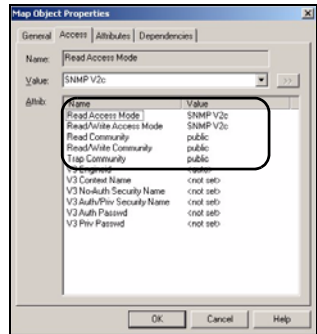
Follow the steps below to add your device(s) manually.

- 1 Click **Insert, MAP Object, Device**.
- 2 In the **MAP Object Properties** screen, enter a descriptive device name and IP address for the device and then click **OK**.



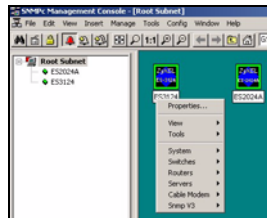
- 3 Click the **Access** tab.
- 4 For initial setup, configure the specified fields to the default values listed in the table below.

Field	Value
Read Access Mode	SNMP V2c
Read/Write Access Mode	SNMP V2c
Read, Read/Write and Trap communities	public

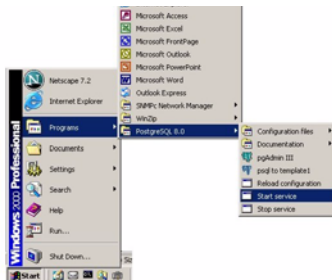


Note: For security purposes, it is strongly recommended you change the **Read Community** and **Read/Write Community** defaults and store this information in a secure place so you will not forget it later.

- 5 After the device has been found, an icon and label appear in the network manager view window.
- 6 Right-click on the device icon to view a set of SNMPc network manager shortcuts. Click **Properties** to verify the information you entered in [Step 4](#).

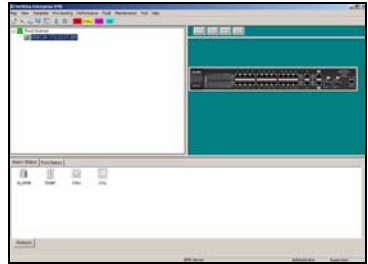


Note: Make sure PostgreSQL database is running. PostgreSQL should start automatically when you start Windows. If it does not, click **Start** (or **start**), **Programs**, **PostgreSQL 8.0** and then click **Start service**.



7 Access the EMS

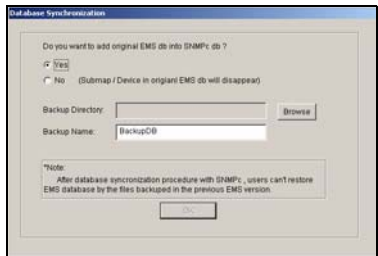
To access the EMS, double-click a ZyXEL device icon in the SNMPc main screen. Click the **Switch Manager** icon to display the main EMS screen.



You have successfully installed the EMS. Refer to the user's guide for configuration information.

7.1 Database Synchronization

If you upgrade EMS from a previous version, the **Database Synchronization** screen displays when you try to access the EMS. You can use this screen to back up the database from a previous EMS version using the new database format.



- 1 If you want to import the database from a previous EMS version into SNMPc, select **Yes**. Select **No** if you have created objects in SNMPc for your ZyXEL devices and you want to have the EMS automatically obtain device information from SNMPc.
- 2 In the **Backup Directory** field, click **Browse** to specify a location to back up the database from a previous EMS version using the new database format.
- 3 In the **Backup Name** field, enter a descriptive name for the file.
- 4 Click **OK** to continue.

Note: Database backup using the new database format allows you to restore data from a previous EMS version. You cannot restore information from a backup database with the old database format.

Troubleshooting

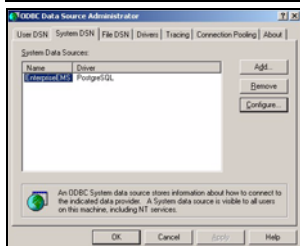
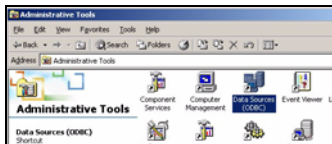
- 1 EMS and/or PostgreSQL will not install properly
 - Make sure that the computer on which you want to install the EMS and PostgreSQL meets the minimum hardware and software requirements. Refer to [Section 2 on page 2](#).
 - Before installing PostgreSQL, make sure your computer is using the NTFS file system. To check your computer's file system, right-click on a drive in Windows Explorer and click **Properties**.
 - Shut down any running services or applications which may affect the installation.
 - Remove any previous versions of PostgreSQL from your computer.
 - Re-install PostgreSQL and EMS in that order.
- 2 I cannot find my device in the SNMPc Management screen.
 - Check that you have compiled the MIBs without errors (see [Section 5 on page 7](#)).
 - Check that you have enabled auto-discovery; see [Section 4 on page 7](#).
 - Check that the map object properties are correct for initial setup; see [Section 6.2 on page 8](#). Make sure the IP address entered is the IP address of the switch you want to manage via the EMS.
 - Check that the ODBC driver is correctly configured; see the next section.
 - Make sure that PostgreSQL is running.
 - Make sure that the computer on which you have installed the EMS is connected to the network where the switch is located.
 - Make sure the ZyXEL switch is turned on.
 - Make sure your computer's Ethernet card is working properly.
 - If the problem still persists, uninstall and re-install the EMS.

Configure the ODBC Driver

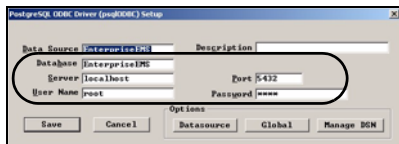
The ODBC driver should already be installed during the EMS installation process. If you have changed the default ODBC settings, make sure the EMS can connect to the PostgreSQL database successfully.

Follow the steps below to configure the ODBC driver in Windows 2000. Steps are similar for other supported Windows operating systems.

- 1 Click **Start, Settings and Control Panel** to open the **Control Panel** screen. Double-click **Administrative Tools**.
- 2 Double-click **Data Source (ODBC)**.
- 3 A screen displays as shown. Click the **System DNS** screen, select **EnterpriseEMS** and click **Configure**.



- 4 The **PostgreSQL ODBC Driver (psqlODBC) Setup** screen displays. Configure the fields exactly as listed in the table below.



Field	Value
Database	EnterpriseEMS
Server	localhost
Port	5432
User Name	root
Password	1234

Note: The field values are case-sensitive.

- 5 Click **Save** to save the changes and close this screen.

Install EMS Remote Client

Follow the steps to install EMS remote client on other computer(s) you want to use for EMS.

- 1 Find and double-click **NetAtlasEnterprise_S103.exe** on the installation CD.
- 2 If prompted, uninstall a previous EMS version.
- 3 A **Welcome** screen displays. Click **Next** in each screen to continue.

- 4 Read the license agreement. Click **Yes** to accept the agreement.

- 5 Click **NetAtlas Enterprise EMS Remote Client** to install the remote client edition.

- 6 Enter the IP address of the computer (the EMS server) where PostgreSQL is installed.
- 7 When the EMS installation process is complete, a screen displays as shown. Click **Finish**.

