

ZyAIR B-122

CardBus 11Mbps Wireless LAN Card

Quick Installation Guide

Version 1.00

December 2003



Important Note

Federal Communications Commission (FCC) Interference Statement

The Wireless LAN Adapter has been tested to the FCC exposure requirements (Specific Absorption Rate).

The equipment complies with FCC RF radiation exposure limits set forth for an uncontrolled environment, under 47 CFR 2.1093 paragraph (d) (2).

This Transmitter must not be co-located or operating in conjunction with any other antenna or transmitter.

Refer to the User's Guide for general FCC statements.

Procedure to View a Product's Certification(s)

1. Go to www.zyxel.com
2. Select your product from the drop-down list box on the ZyXEL home page to go to that product's page.
3. Select the certification you wish to view from this page.

About Your ZyAIR

The ZyAIR is an IEEE 802.11b compliant wireless LAN PC card that fits into any 32-bit CardBus slots. Its maximum 11 Mbps data rate, which gives Ethernet equivalent speed, is ideal in the corporate or home environment.

1. Installation Requirements

Before installation, make sure you have the following requirements.

- Pentium II 300MHz or above
- A minimum of 6 MB available hard disk space
- A minimum of 32 MB RAM
- A CD-ROM drive
- A CardBus slot
- Windows 98 SE/Me/2000/XP
- Windows 98 SE users may need the Windows 98 SE CD

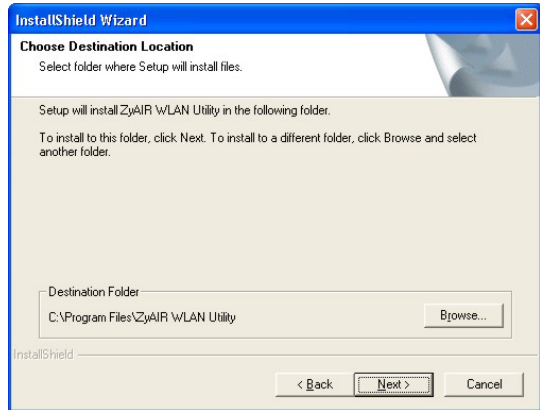
2. ZyAIR Utility and Hardware Installation

The installation procedures are similar for all supported Windows versions. Windows XP screen shots are shown unless otherwise specified.

DO NOT insert the ZyAIR at this point.

1. Insert the support CD into the CD-ROM drive on your computer. The CD auto runs. Otherwise, locate and double-click on **setup.exe**. A Welcome screen displays. Click **Next**.

2. Click **Next** to accept the default file location or click **Browse** to select an alternate folder.



3. If a warning window displays, click **Yes** (Windows 2000) or **Continue Anyway** (Windows XP).



4. Windows 2000/XP: Click **Finish** to complete the installation.
Windows 98 SE/Me: Click **Finish** to restart the computer.

5. Locate an available CardBus slot on the computer.
6. With the pin connectors facing the slot and the LED side facing up, slide the ZyAIR into the slot. The LEDs turn on if the ZyAIR is properly inserted.



Never bend, force or twist the ZyAIR into the slot.

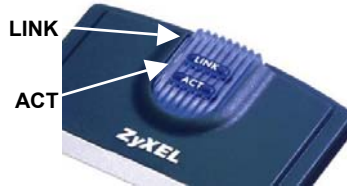
7. Windows 2000: If a warning window displays, click **Yes**.
8. Windows XP: A **Found New Hardware Wizard** window displays. Select **Install the software automatically (recommended)** and click **Next**.
9. Windows XP: If a warning window displays, click **Continue Anyway**. Then click **Finish** to complete the installation process.

After you install the ZyAIR Utility and insert the ZyAIR, an icon appears in the system tray.



If the ZyAIR Utility icon displays, the ZyAIR is installed properly. Refer to the *ZyAIR Utility User's Guide* to configure the ZyAIR.

LED Display



The following table describes the LEDs on the ZyAIR.

LED	COLOR	STATUS	DESCRIPTION
ACT	Blue	Blinking	The ZyAIR is receiving or sending data.
		Off	The ZyAIR is not receiving or sending data.
LINK	Blue	On	The ZyAIR has a connection to a wireless LAN.
		Blinking	The ZyAIR is connecting to a wireless LAN.
		Off	The ZyAIR is not connected to a wireless LAN or not receiving power.

Troubleshooting

PROBLEM	CORRECTIVE ACTION
Windows does not auto-detect the ZyAIR.	Make sure the ZyAIR is inserted into the computer PCMCIA slot properly and then restart your computer. Check the LEDs on the ZyAIR.
	Perform a hardware scan by clicking Start, Settings, Control Panel and double-clicking Add/Remove Hardware . (Steps may vary depending on the version of Windows). Follow the on-screen instructions to search for the ZyAIR and install the driver.
	Check for possible hardware conflicts. In Windows, click Start, Settings, Control Panel, System, Hardware and then click Device Manager . Verify the status of the ZyAIR under Network Adapter . (Steps may vary depending on the version of Windows).
	Install the ZyAIR in another computer. If the error persists, you may have a hardware problem. In this case, you should contact your local vendor.