



What is the SAP GUI Family?

SAP GUI for Windows

SAP GUI for Java

SAP GUI for HTML

Choosing the Right GUI

Other Sessions

Summary

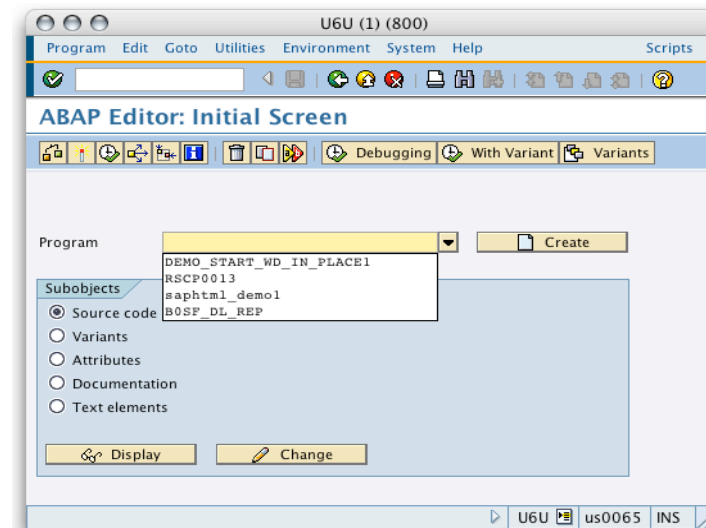
What's New in SAP GUI for Java 7.10 (1/3)

Platforms

- Support of JSE 6.0 where available
- Windows Vista
- Mac OS X 10.5
- HP-UX 11.31
- Various Linux Distributions

Features and improvements

- Input history (by far the most requested feature)
- Revised preference panels
- Dynpro Splitter



For details see the release notes

What's New in SAP GUI for Java 7.10 (2/3)

Mac OS X 10.5 (Leopard) / Dynpro Splitter

The screenshot displays the SAP GUI for Java 7.10 interface on a Mac OS X 10.5 (Leopard) desktop. The main window is titled "ABAP Debugger(1) (Exclusive)" and shows the "ABAP Source Code Display" pane. The source code is as follows:

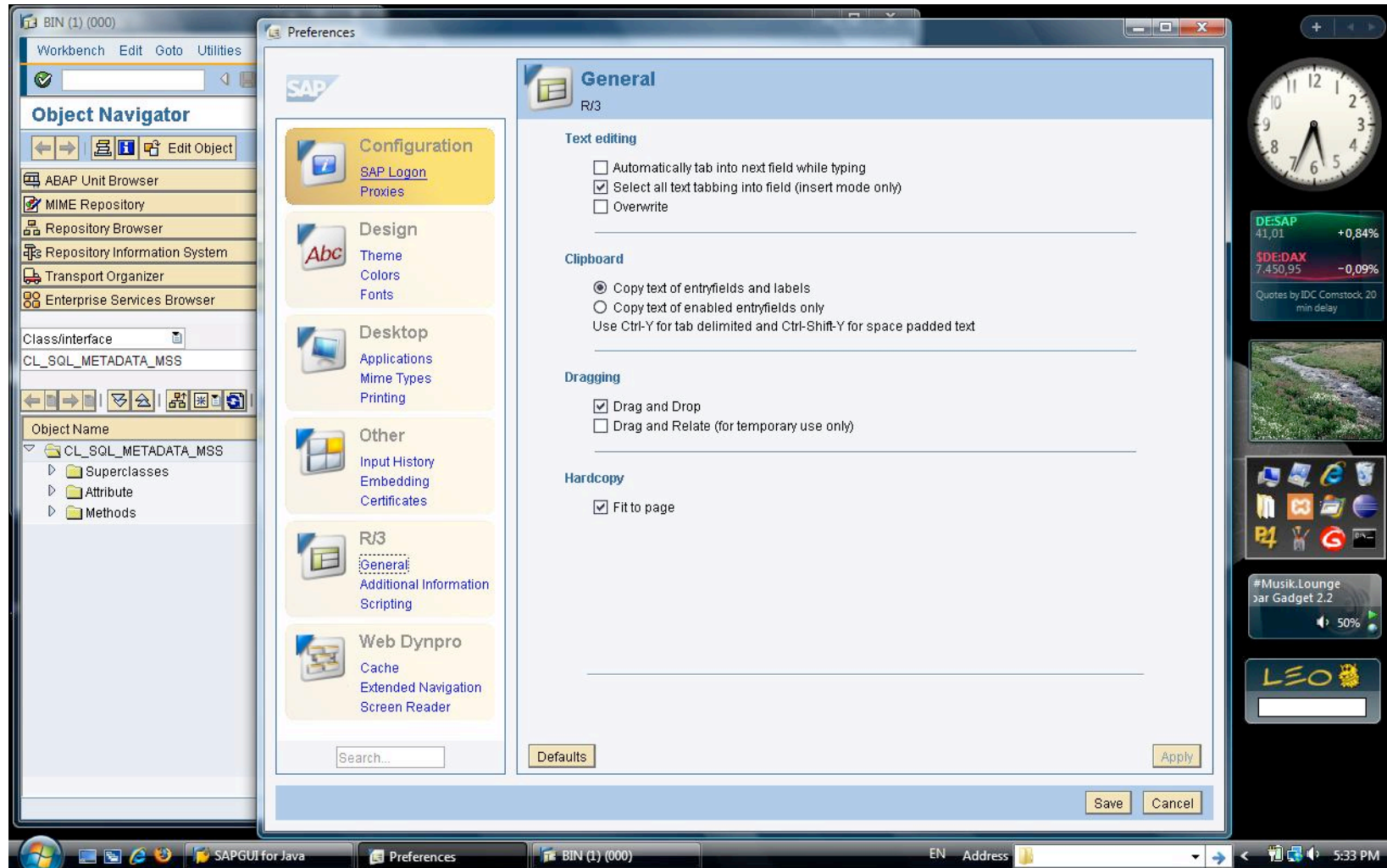
```
8 DATA: SAP_SYS LIKE SYS_TYPE VALUE 'SAP'.  
9  
10 CALL 'C_SAPGPARAM' ID 'NAME' FIELD 'transport/systemtype'  
11 ID 'VALUE' FIELD SYS_TYPE.
```

The "Variables" pane is also visible, showing a table with columns: Variable, Val., C..., Hexadecimal Value, Technical Type, Absolute Type, and Rea... The table is currently empty.

The interface includes a menu bar (SAPGUI, File, Edit, Scripts, Window, Help), a toolbar, and a sidebar with a list of objects. The desktop background shows the Mac OS X dock with various application icons.

What's New in SAP GUI for Java 7.10 (3/3)

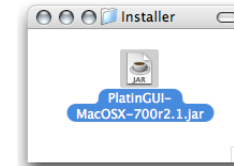
Windows Vista / New Preferences Dialog



Deployment Options

Manual Installation

- Double-clickable installer
- Involves user interaction
- Performed by end user



Silent Installation

- Run from command-line without any user interaction
- Options and install path are defined in a text file
- Performed by administrator

```
Terminal — tch — 140x30
[ds0766:~/Installer] voersik java -jar PlatinGUI-MacOSX-700r2.1.jar -help
Installation program for SAPGUI for the Java Environment

Usage: java -jar PlatinGUI-platform-version.jar [options]

Available options:
  -i <infile>      reads installation configuration input from the file <infile>
  -? -help        prints this help text

Create <infile> in the following way:
# comment
# property=<value>
# option=<value>
. . .

Available properties:
installpath      absolute installation directory for the SAPGUI for Java
disable         if set to "true" silent installation will be triggered (without user interface)
uninstall       if set to "true" this version of SAPGUI for Java will be uninstalled (if already installed)
reinstall       if set to "true" this version of SAPGUI for Java will be uninstalled (if already installed) before installation
jredefault       if set to "true" JAVA_HOME will be used on Win32 platforms
nonstartouts    if set to "true" no desktop shortcuts will be created on Win32 platforms
logfile         absolute path to logfile including file name

NOTE: - If you set "disable" property
      and you don't set "uninstall=true" or "reinstall=false" properties
      then you must also set "installpath" property
      - you can set either "uninstall" or "reinstall" property

[ds0766:~/Installer] voersik
```

Web Deployment

- Installer unpacked on a Web server
- Installation triggered by the content of a web page
- Installer runs as a signed applet
- Prepared by administrator, run by end user



For details see chapter "Installation" inside the manual

Central Configuration Management

SAP GUI for Java needs configuration information

- List of all available SAP systems (message servers)
- SAP routers
- Needs to be available on all user workstations

Solution: Web-based Configuration

- Keep common configuration information central
- Simple text files on web server
- User needs to enter one URL only

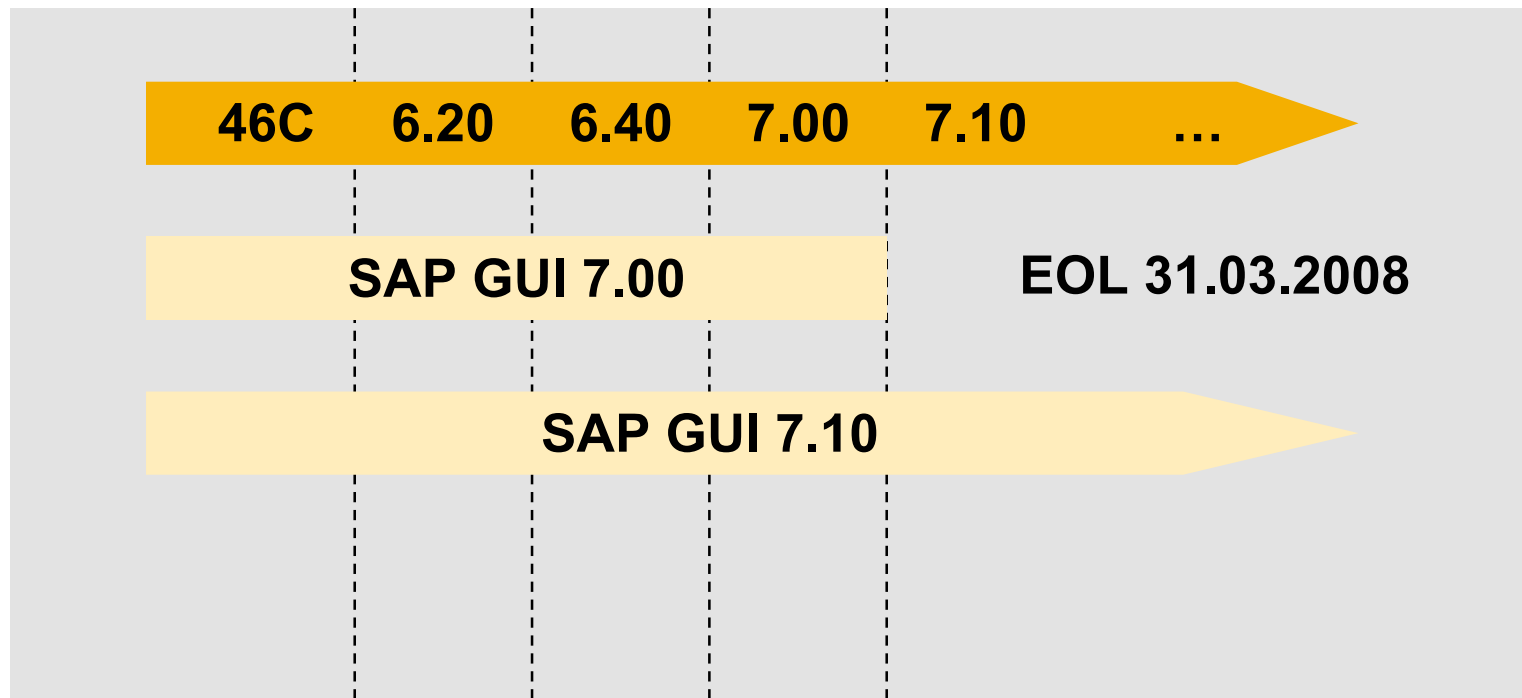
New: “ready to go” installation

- Administrator creates templates for the configuration
 - URL to central configuration, settings (connection colors, preset options)
- Templates are deployed during installation
- Result: **no** hand operated configuration required after installation

For details see chapter “Administration” in manual

Supported SAP Releases

and lifetime of SAP GUI for Java versions



See <http://service.sap.com/pam> and <http://service.sap.com/sapgui-java> for details

Supported Platforms

Operating Systems

- AIX 5.2, 5.3 (32bit JVM)
- HP-UX 11.0, 11.11 (PA-RISC), 11.23 (PA-RISC), **11.31 (PA-RISC)**
- Linux RedHat EL4 (32bit JVM)
- **Linux RedHat EL5 (32bit JVM)**
- Linux SuSE SLES 10 (32bit JVM)
- Linux openSuSE 10.1-**10.2**, SLED 10 (32bit JVM)
- Mac OS X 10.4, **10.5** (PowerPC / Intel)
- Solaris 8, 9, 10 (SPARC)
- Windows XP Home, Professional (32bit JVM)
- Windows Server 2003 (32bit JVM)
- **Windows Vista (Business / Ultimate) (32bit JVM)**

Java Virtual Machines

- JSE 5
- **JSE 6 (on Linux, Solaris, Windows)**

See <http://service.sap.com/pam> and SAP note 954572 for details

Limitations of the SAP GUI for Java

Limitations compared to SAP GUI for Windows

- Office integration into SAP transactions is not available
- Some GUI components like the BEx explorer are not available
- Some controls in SAP GUI for Windows used for special purposes are not available as JavaBean in SAP GUI for Java, for example
 - SAP SmartForms
 - advanced ABAP Editor Control
- Graphical screen painter is not available
- Translations of built-in texts like in logon window or options menu are not available for all languages SAP supports
- To see if a transaction is supported for use with SAP GUI for Java check in transaction SE93

For detailed information see note 454939

Further Information

→ SAP Public Web:

SAP Developer Network (SDN): www.sdn.sap.com

Forums in SDN:

- SAP GUI (Windows und Java) Forum
- Internet Transaction Server (ITS) Forum

Wiki in SDN:

- Wiki – Internet Transaction Server

Business Process Expert (BPX) Community: www.bpx.sap.com

SAP GUI Family on service.sap.com/sapgui

→ Related SAP Education and Certification Opportunities

<http://www.sap.com/education/>