

# SAP NetWeaver Developer Workplace SR1 (SPS06) – part 7 (DWP Install Quick Test)

## **Before you start**

Please check the document called **SAP NetWeaver Developer Workplace SR1 (SPS06) – part 7a (DWP Install Quick Test)** in order to see if any updated information is available to the information included in this document.

Also, make sure you finished everything as documented in **part1** to **part6**.

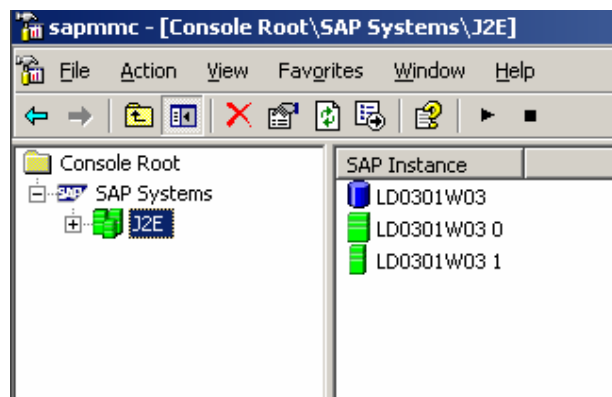
## **Introduction**

You can check your installation now by going through some quick (smoke) tests as described below.

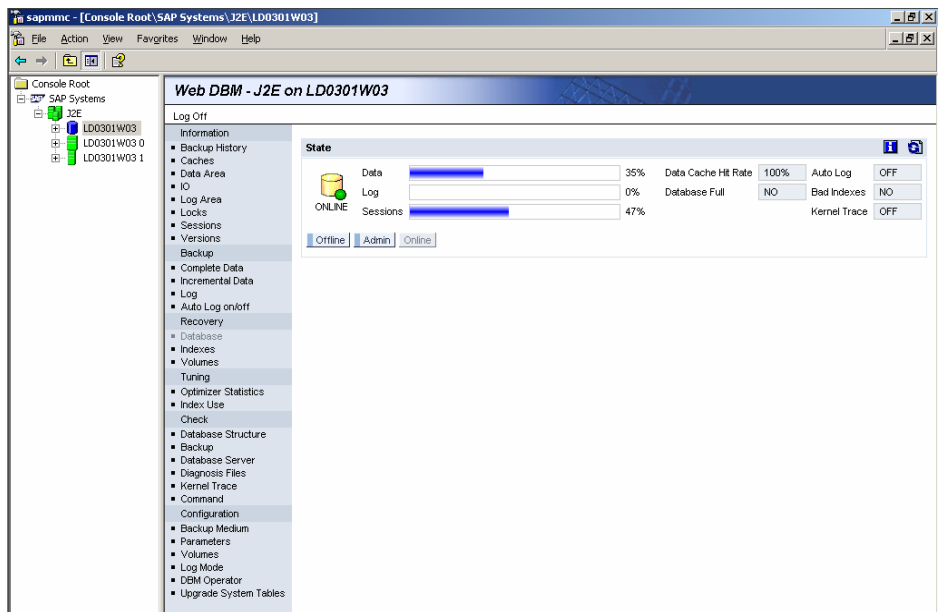
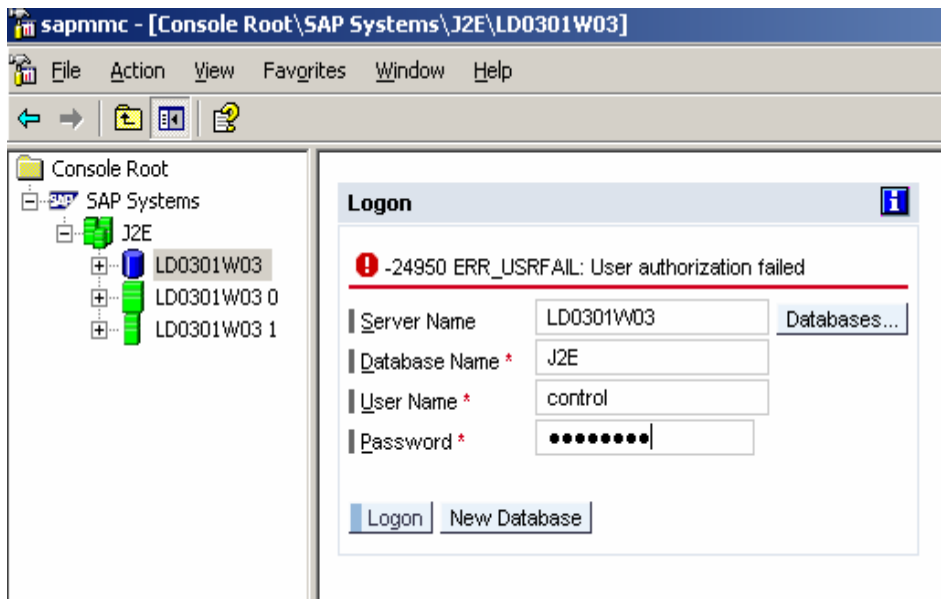
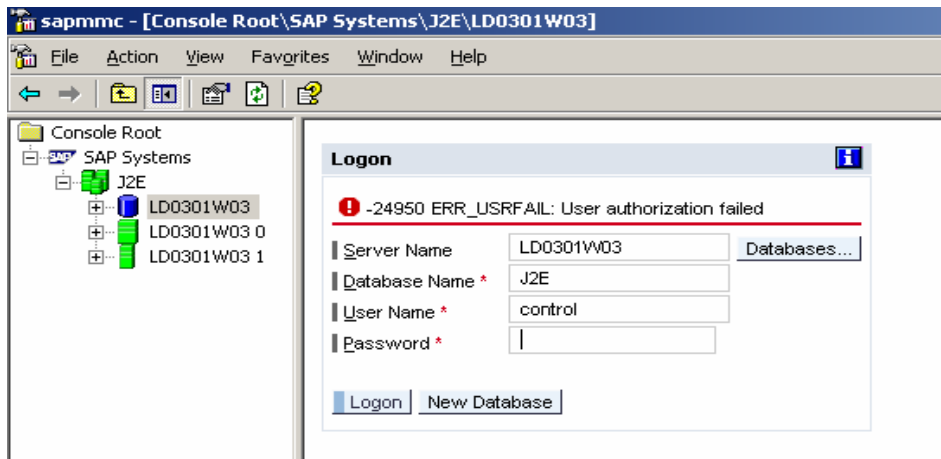
Check that the **J2EE engine and database are running**.




Select the SAPMMC icon on your desktop and you should get something as depicted below. The green colors are usually positive indications, that everything is up and running.



Check the database as follows using the user control and the password which you used during your SAPinst installation.

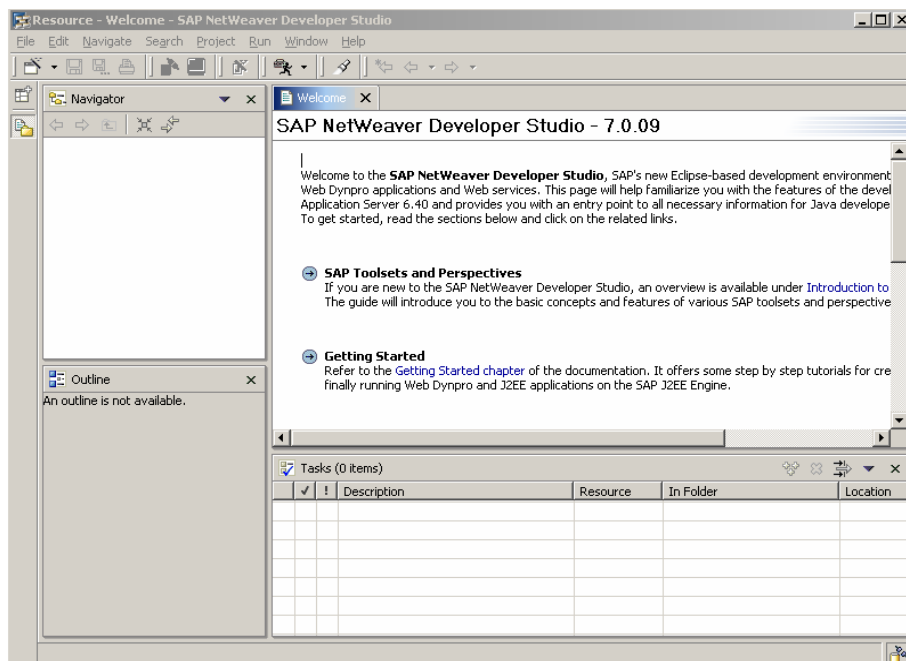


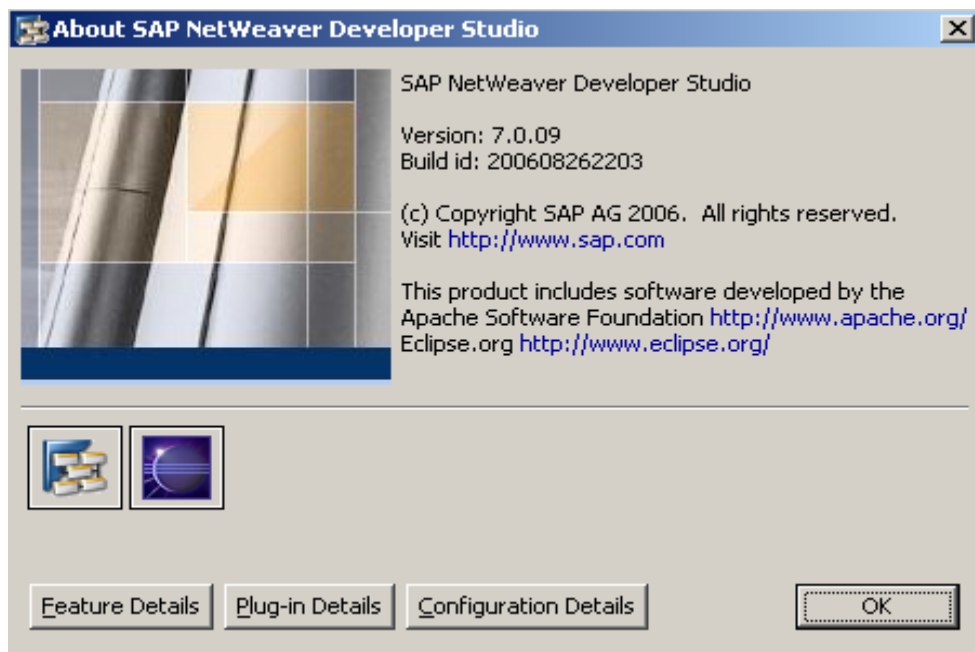
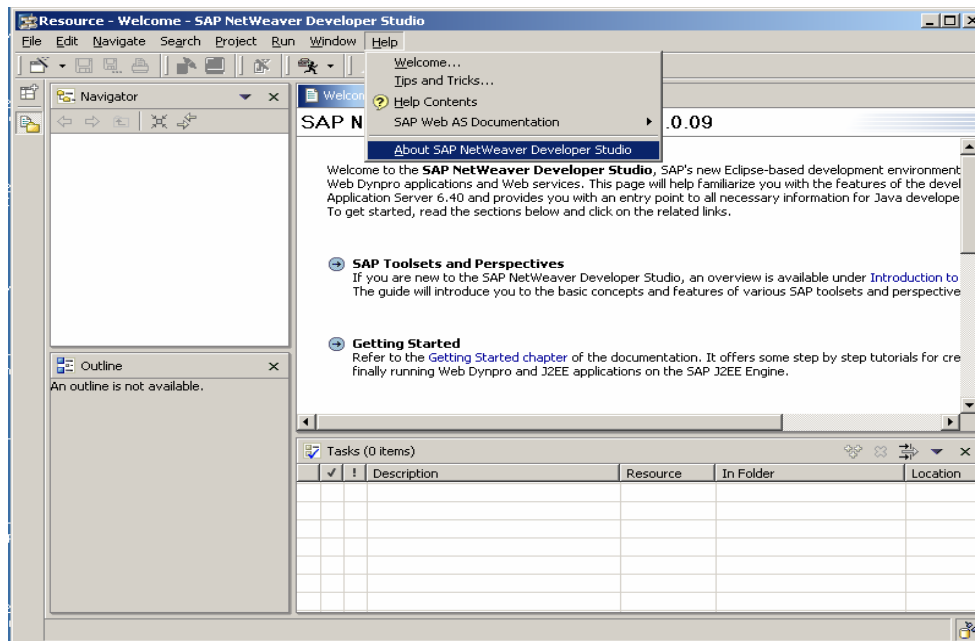
Select the information icon  and just check, for example, under the section Parameters ->

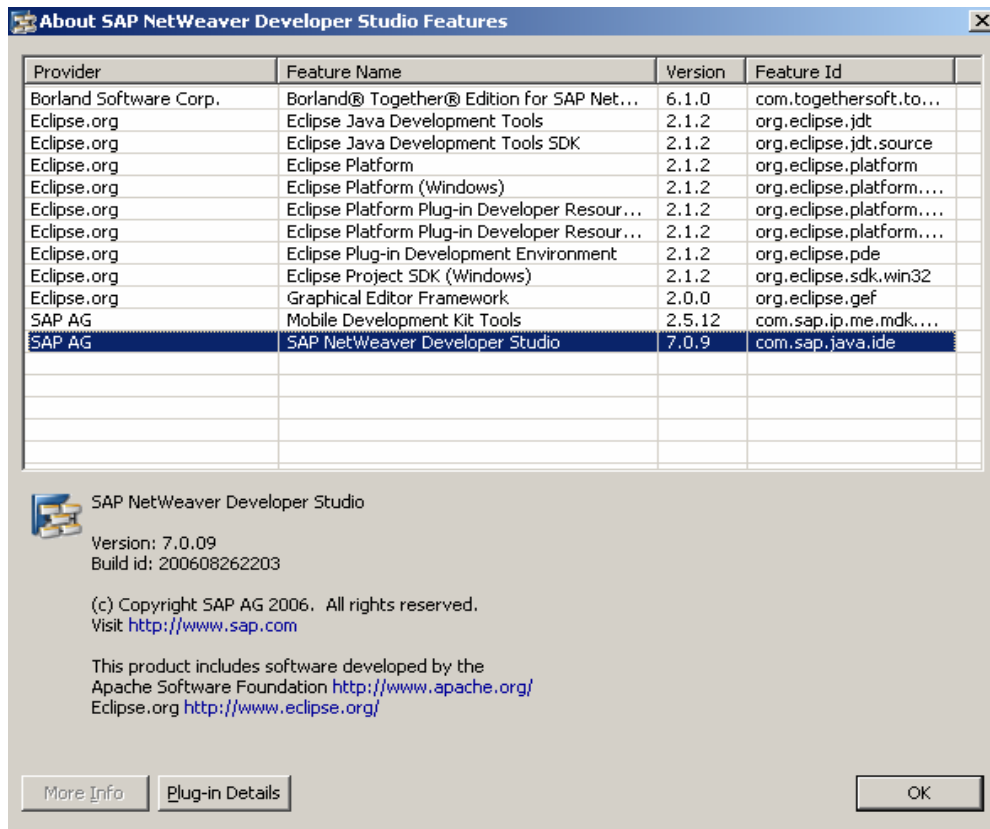
MAXUSERTASKS 50 Maximum number of simultaneously active users (database sessions)

Check that the **SAP NetWeaver Developer Studio starts.**

Select the SAP NetWeaver Developer Studio icon located on your desktop ->



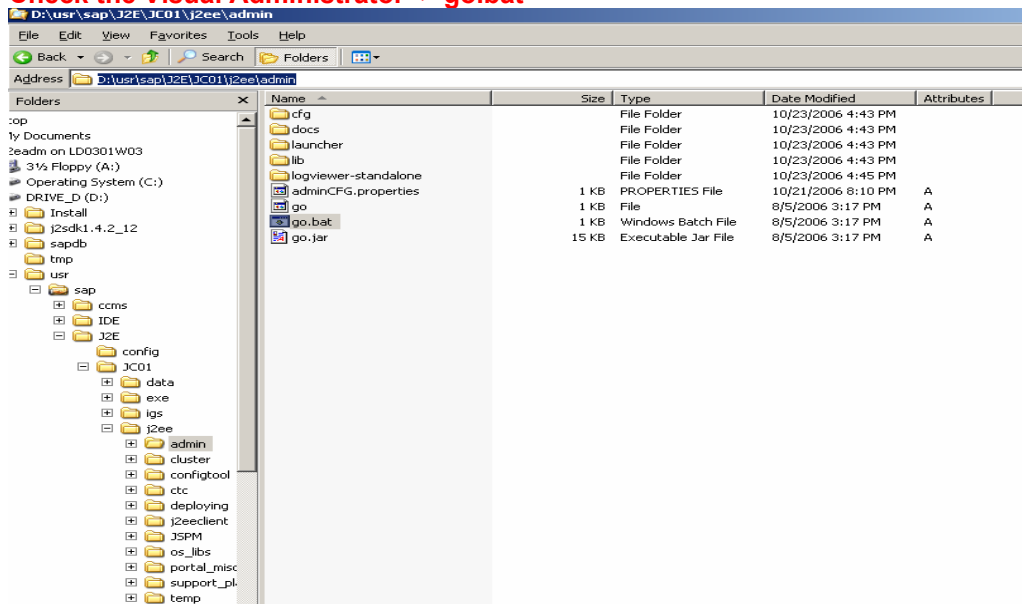


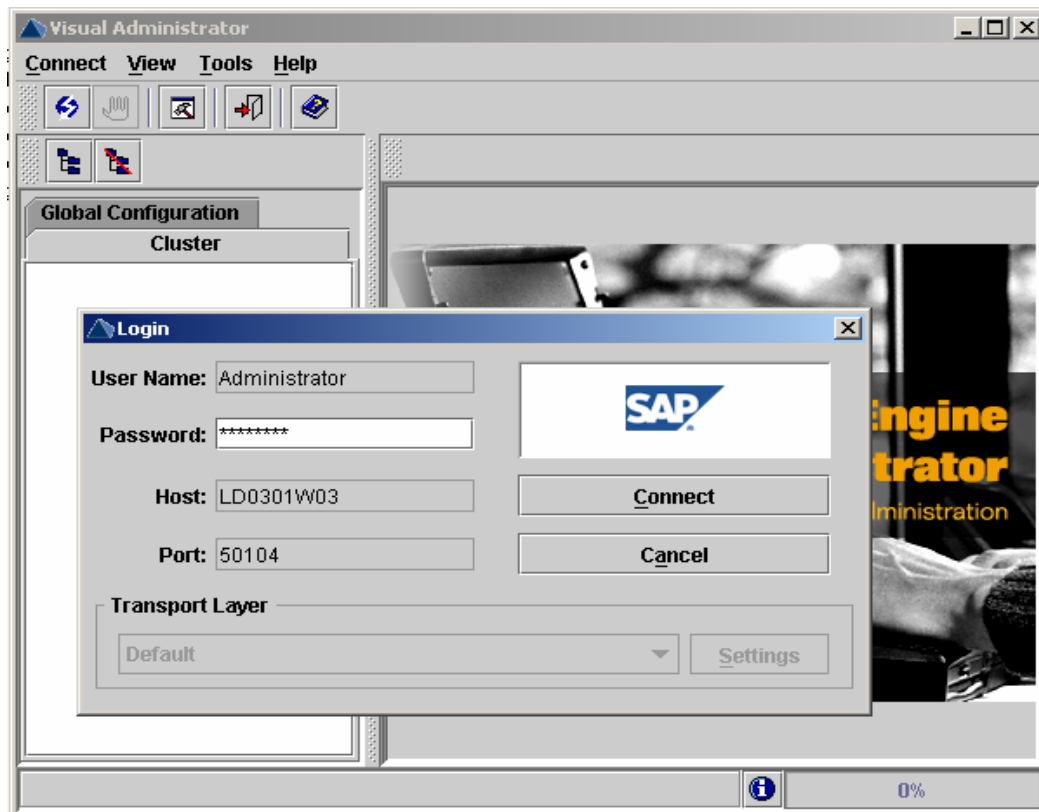
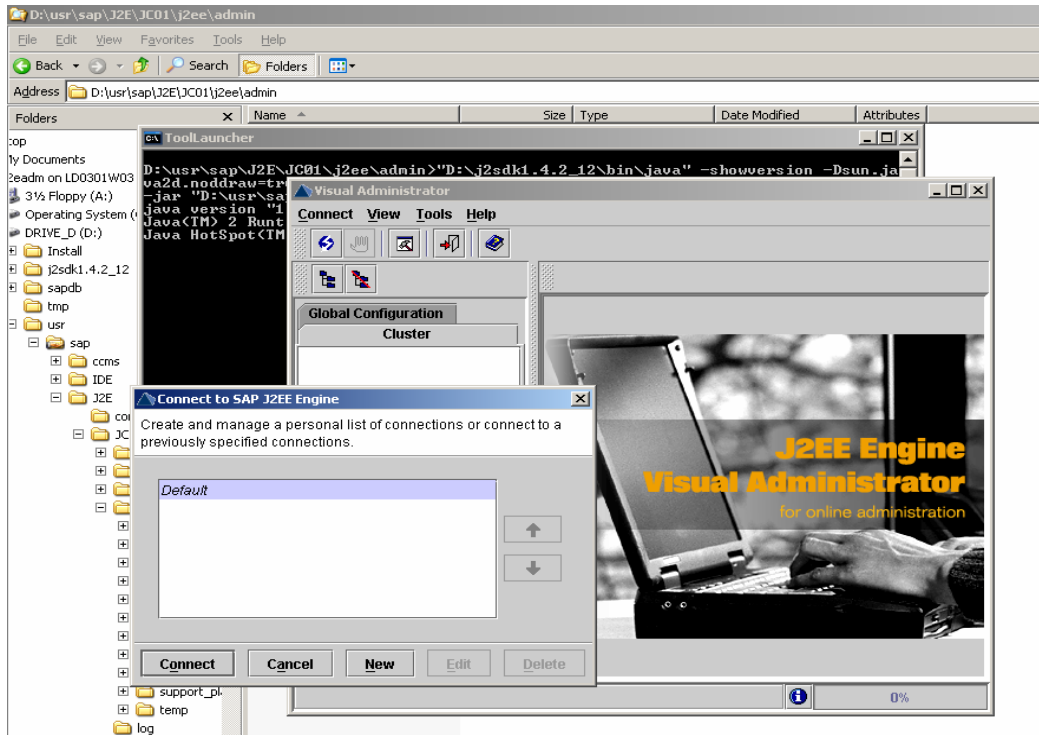


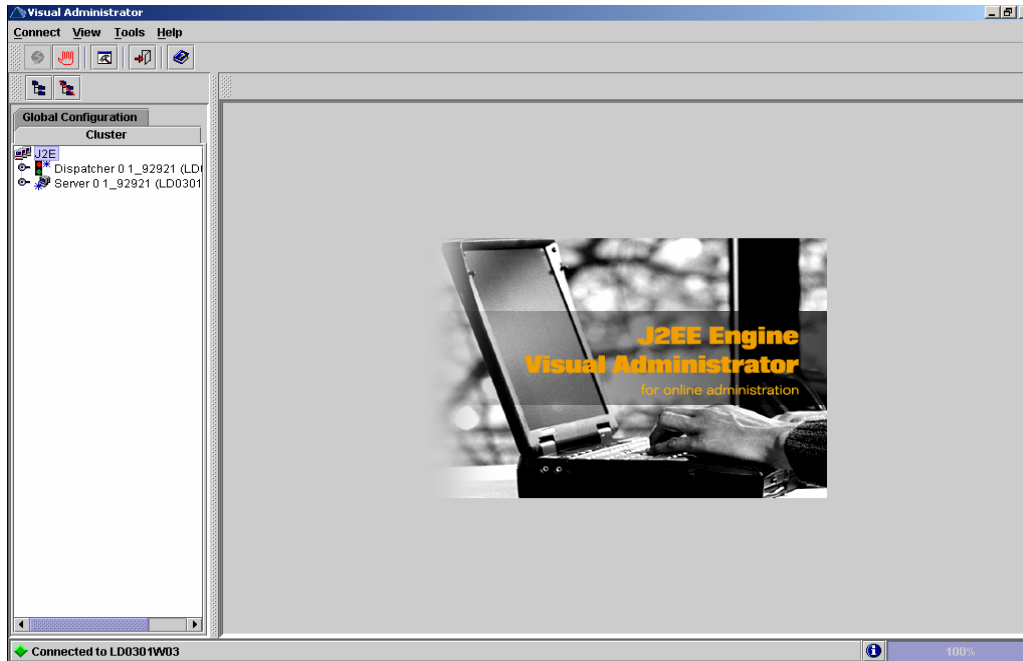
Check that the **Deployment Tools (Deploy Tool, SAP - Software Deployment Manager GUI, Script Files)** can be started, **Visual Administrator, Config Tool, Java Support Package Manager (JSPM), SAP NetWeaver Administrator, Enterprise Portal etc.**

Select the appropriate files as depicted below.

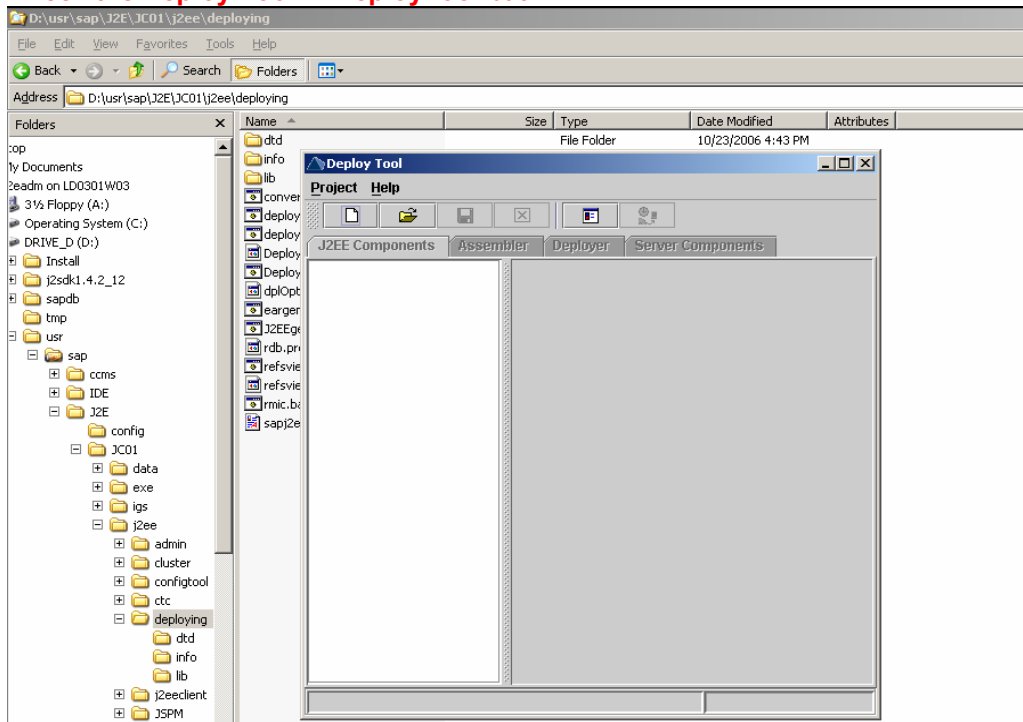
**Check the Visual Administrator -> go.bat**



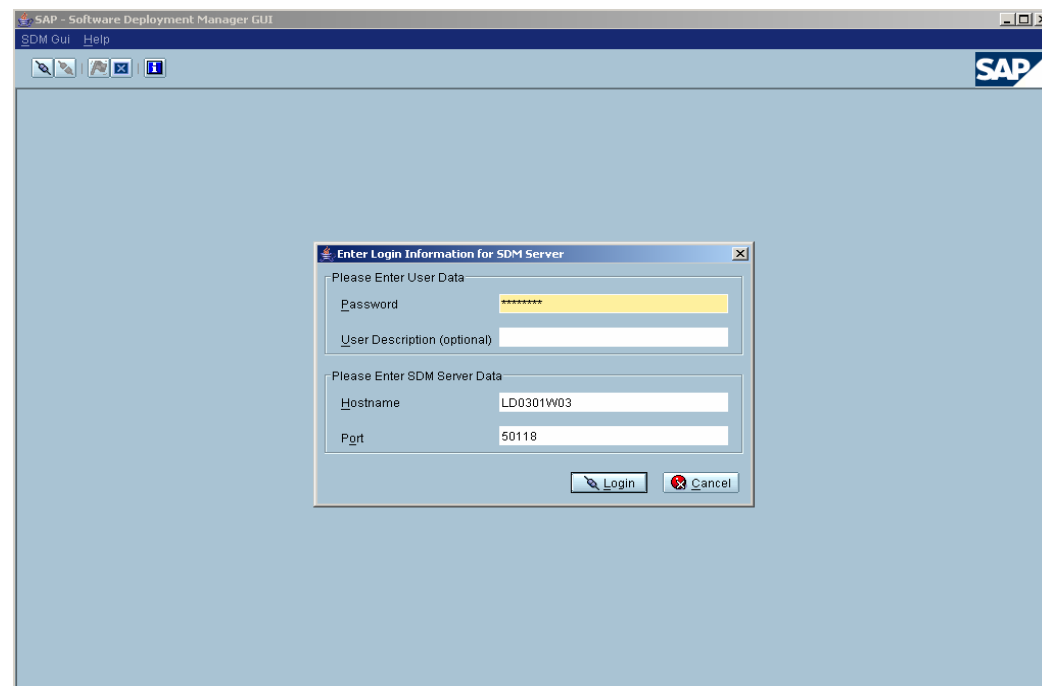
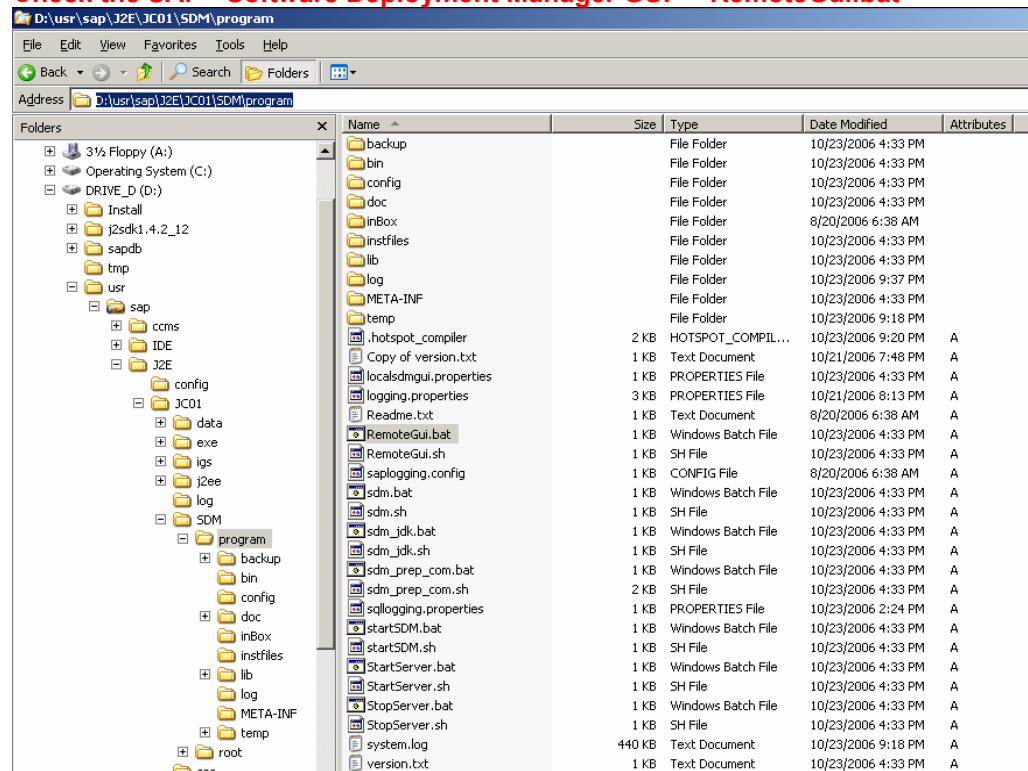




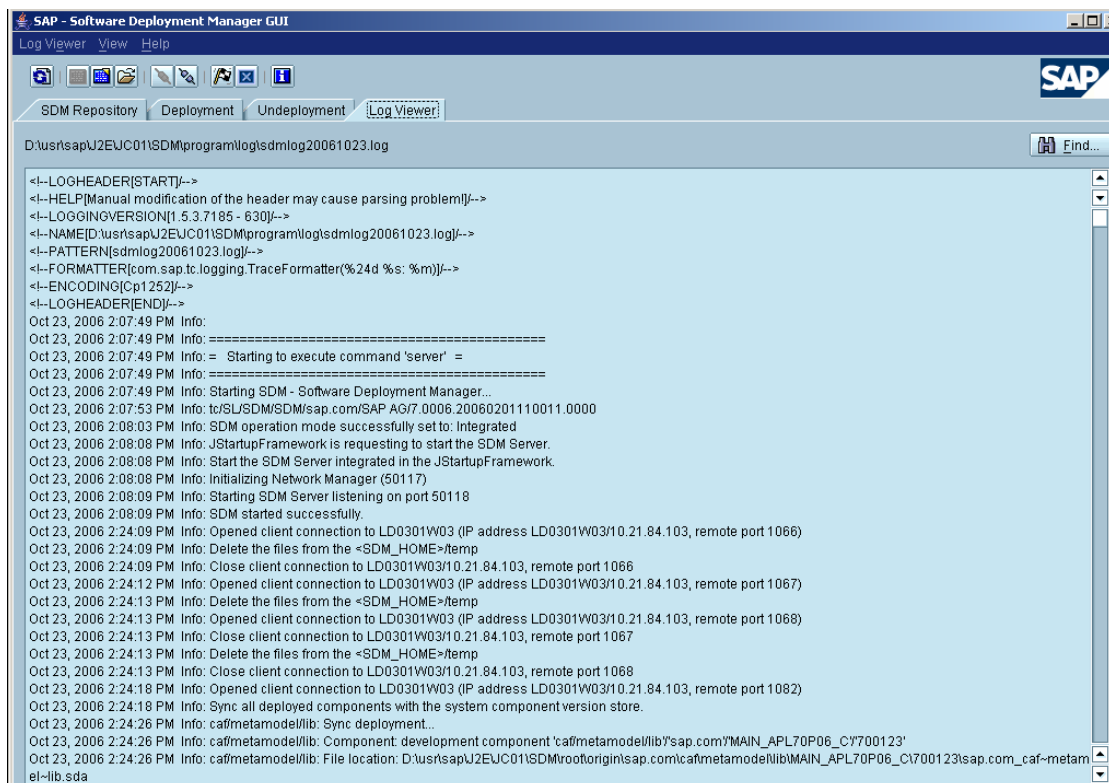
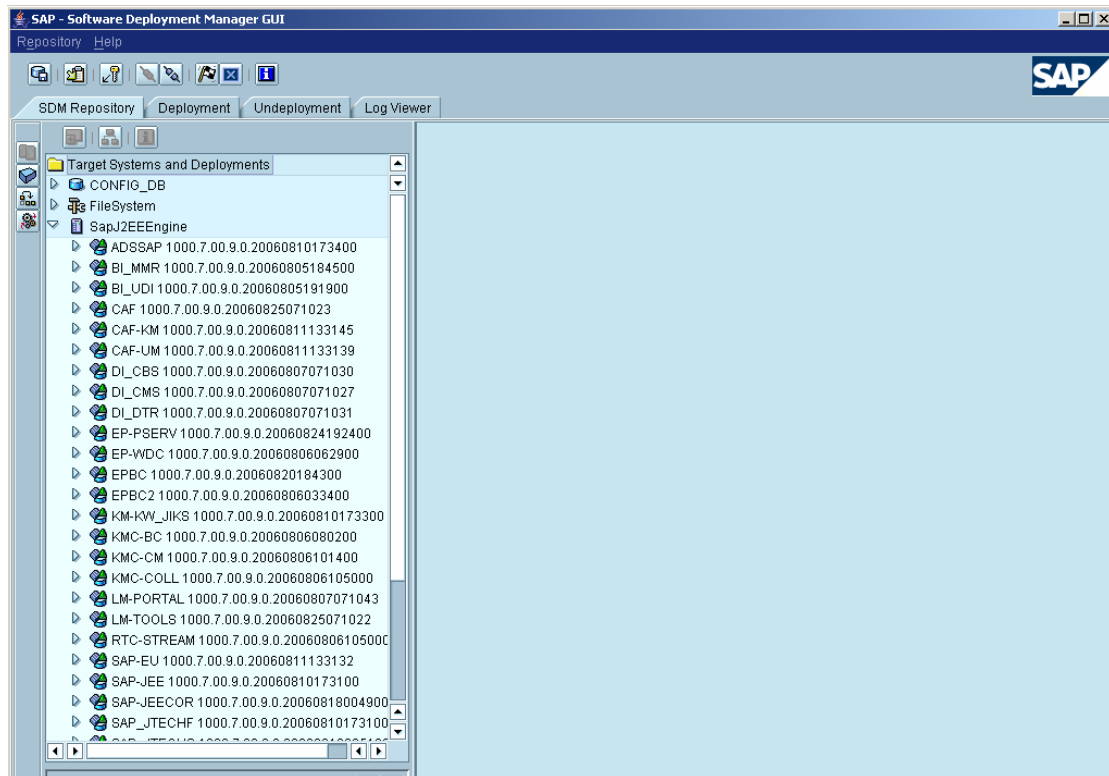
### Check the Deploy Tool -> DeployTool.bat



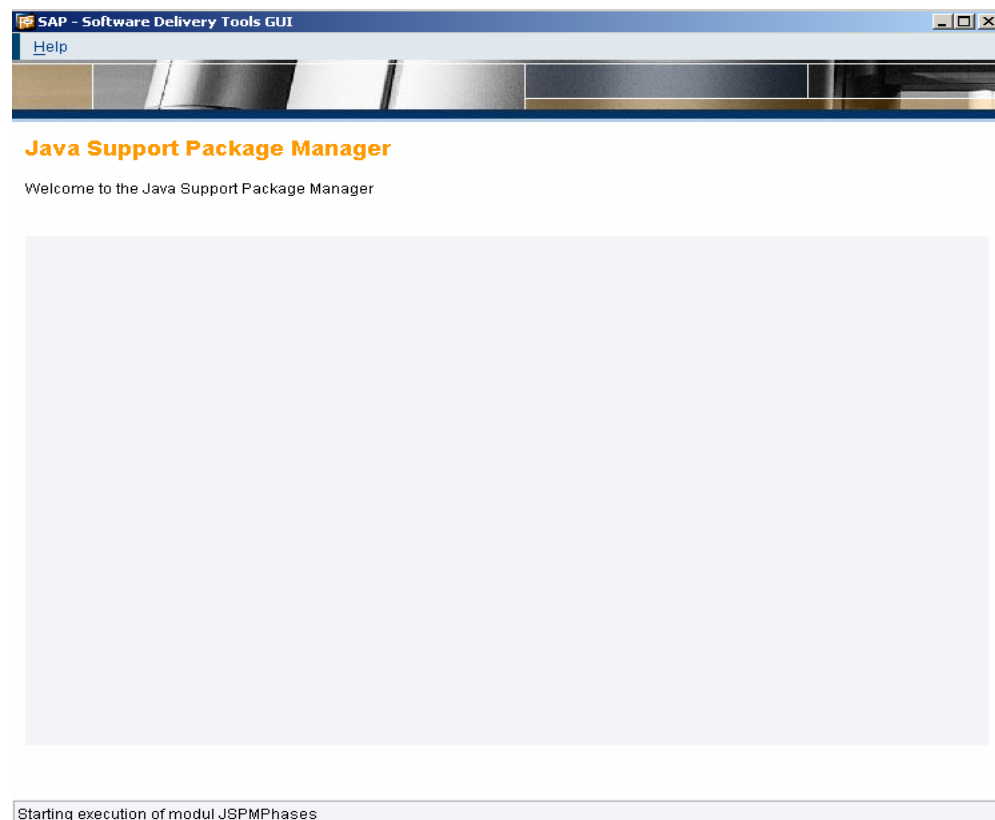
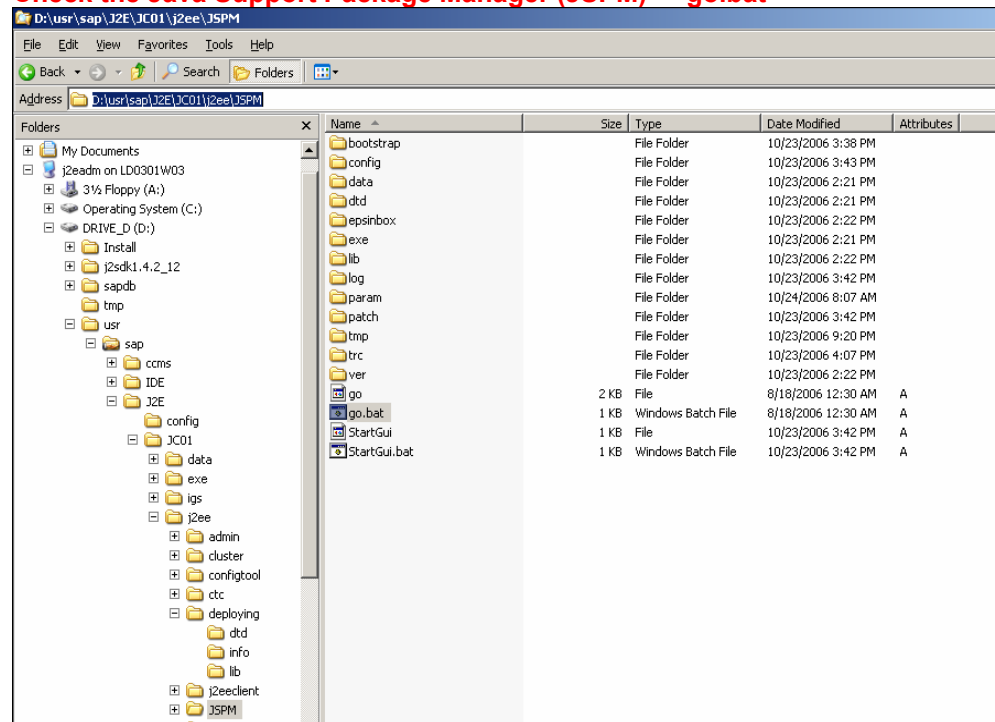
## Check the SAP - Software Deployment Manager GUI -> RemoteGui.bat

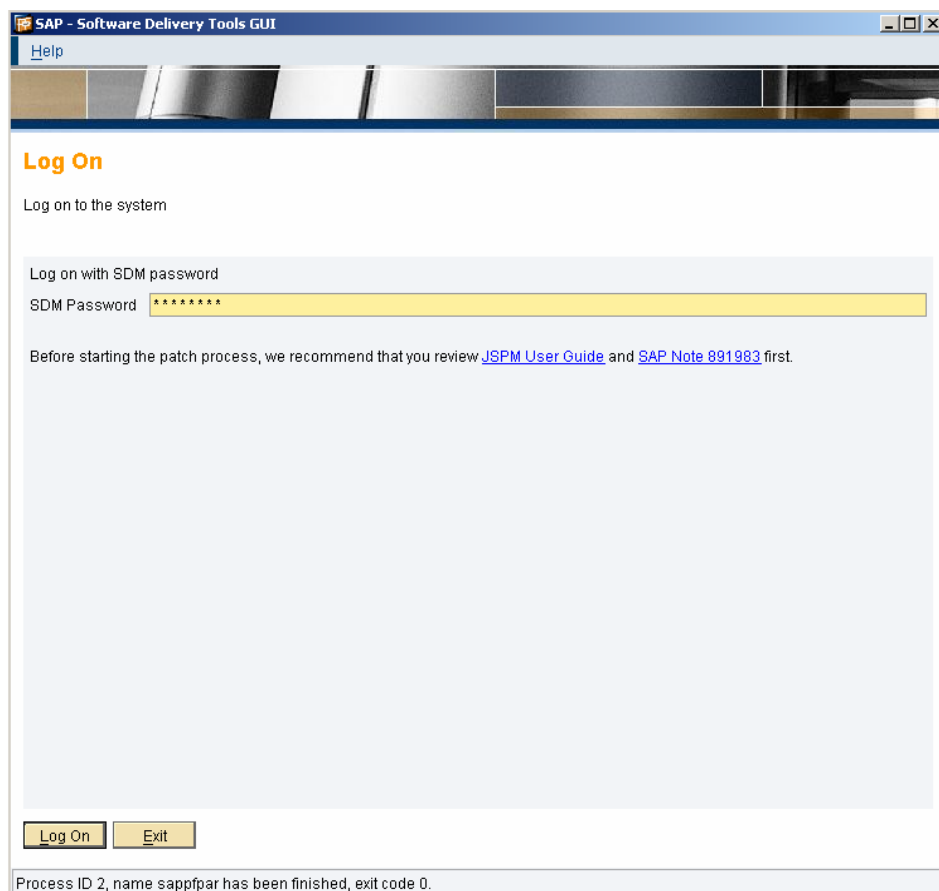
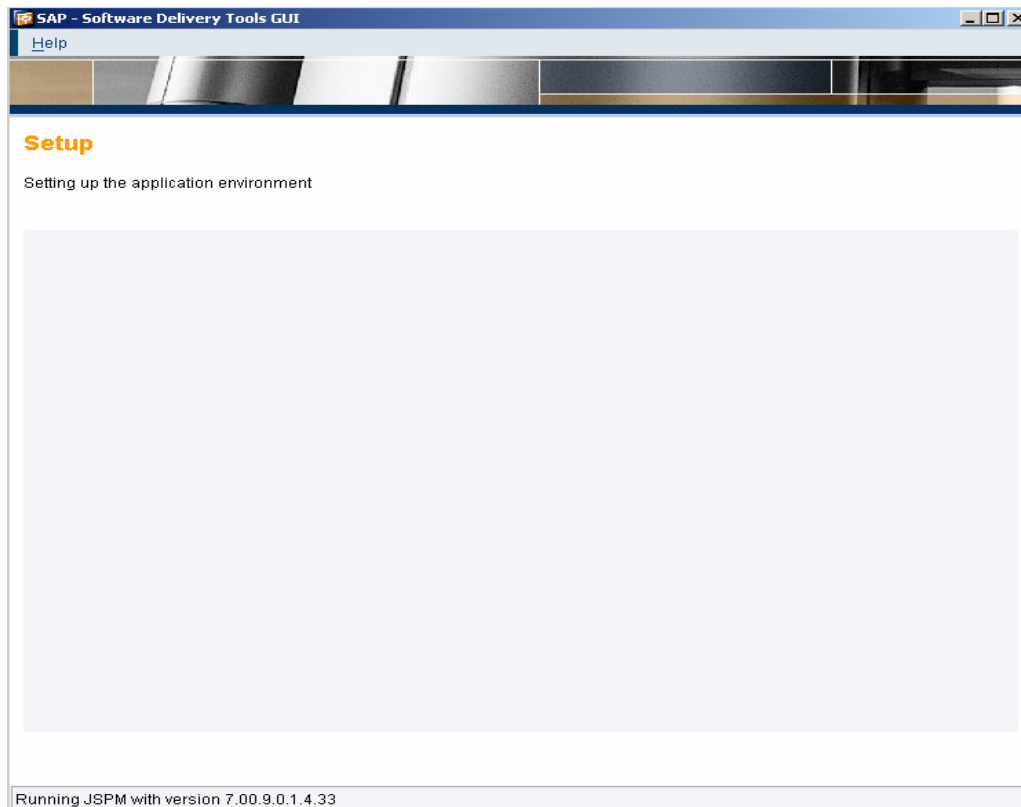


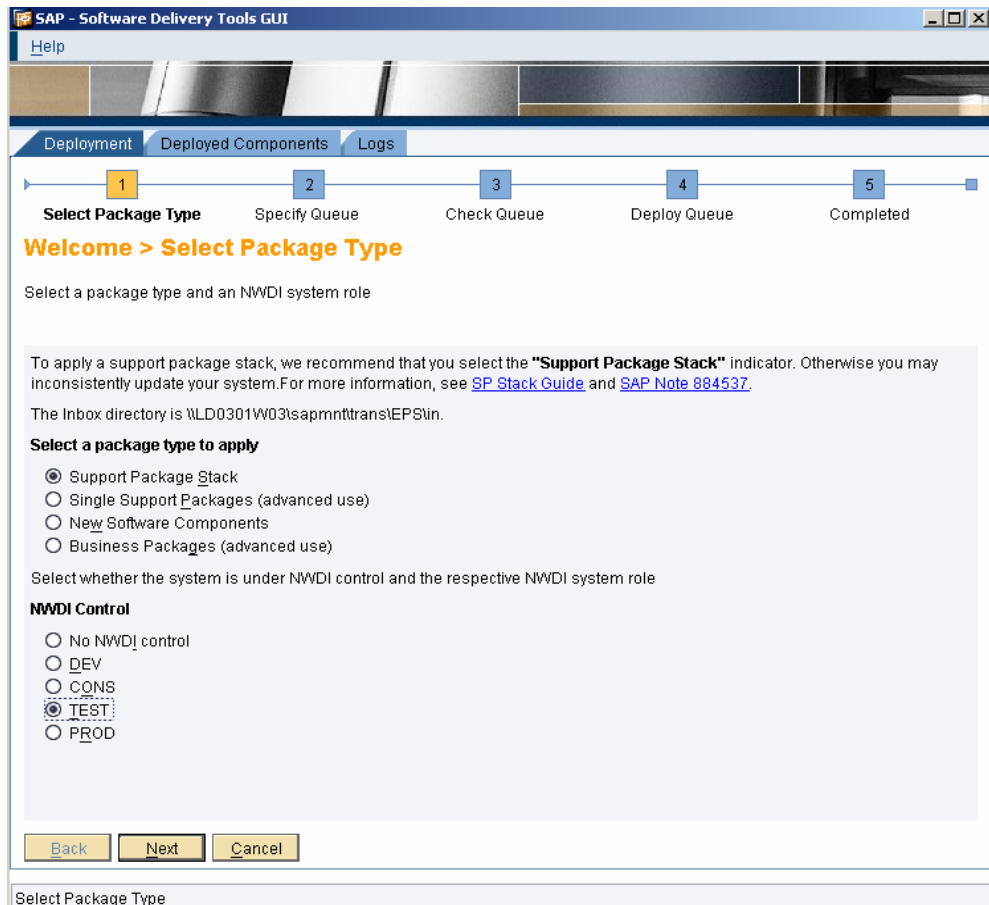




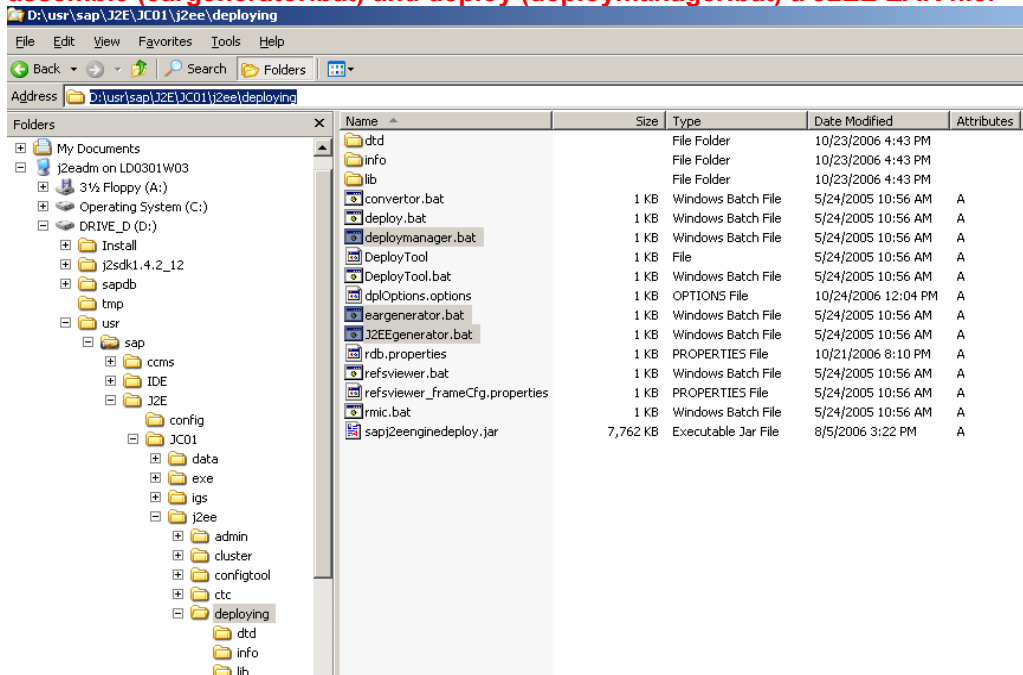
## Check the Java Support Package Manager (JSPM) -> go.bat



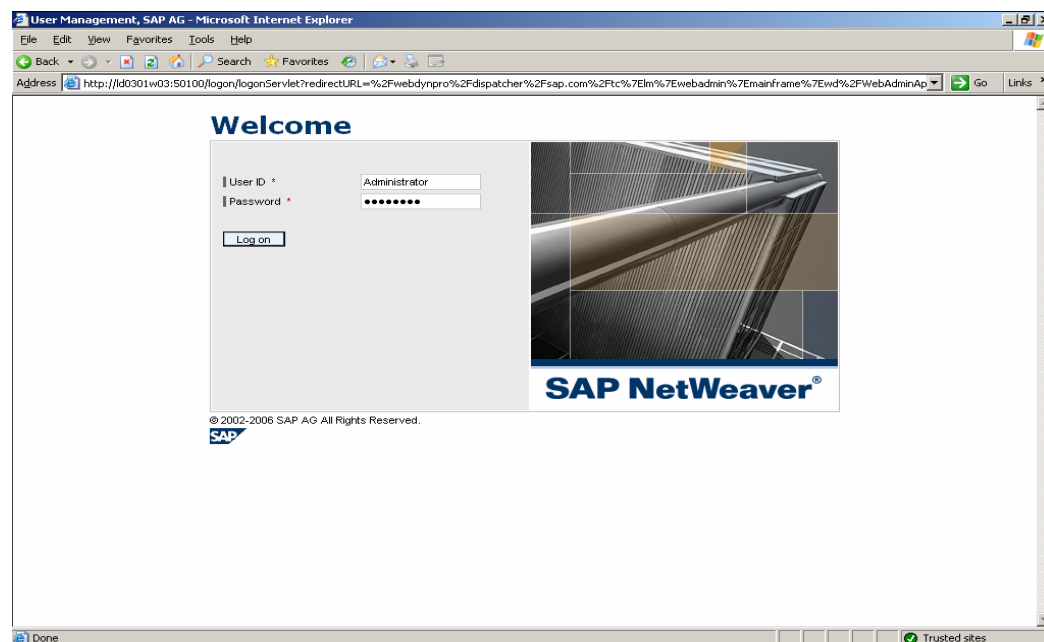
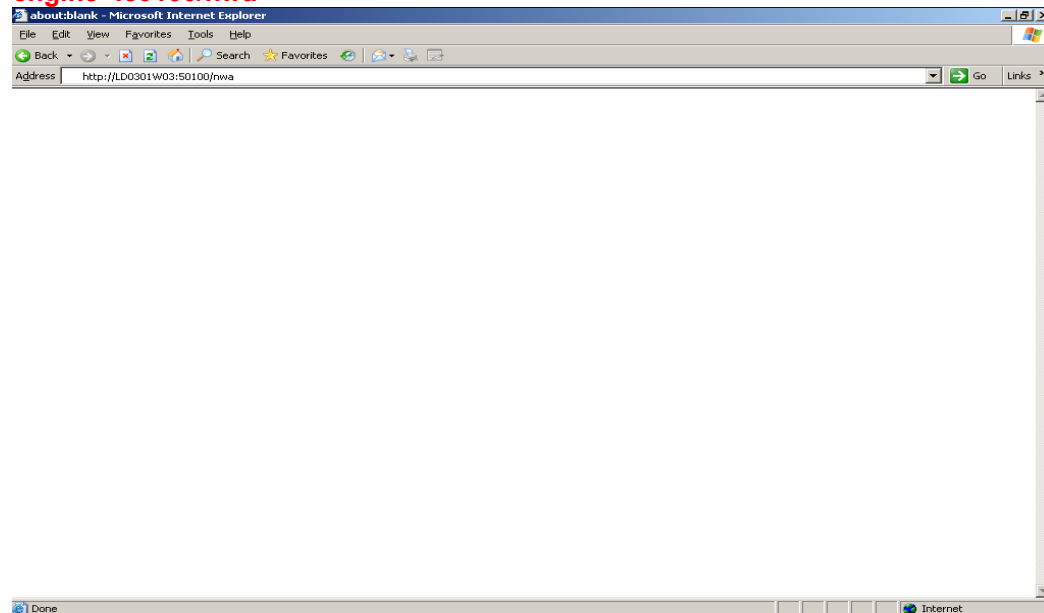


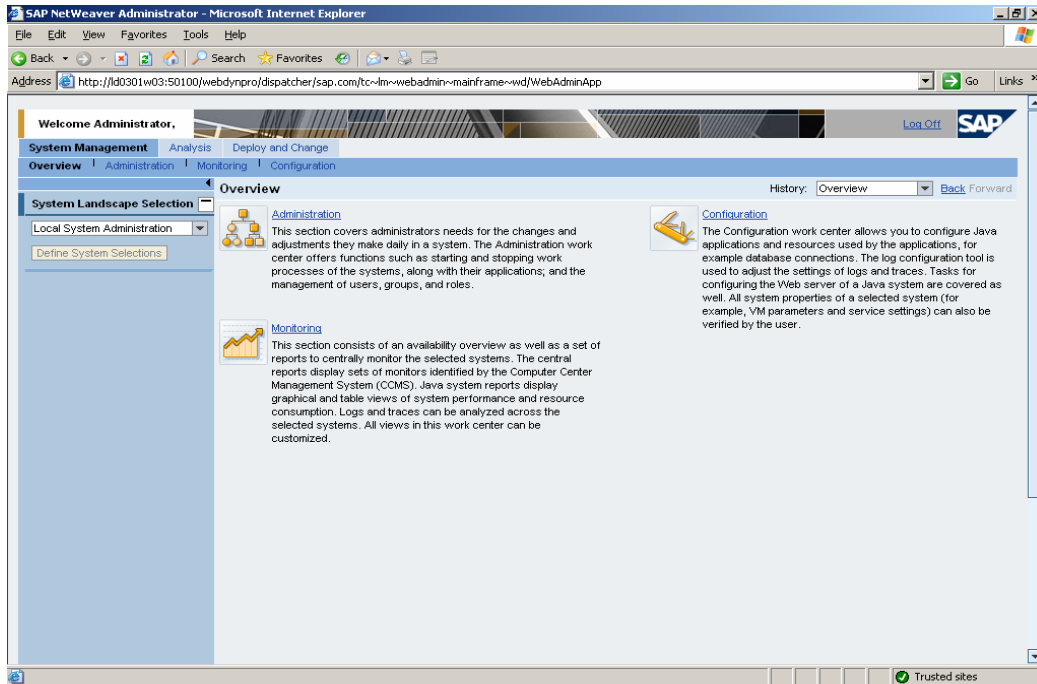


**Check the location of the script files you can use to generate (J2EEgenerator.bat), assemble (eargenerator.bat) and deploy (deploymanager.bat) a J2EE EAR file.**

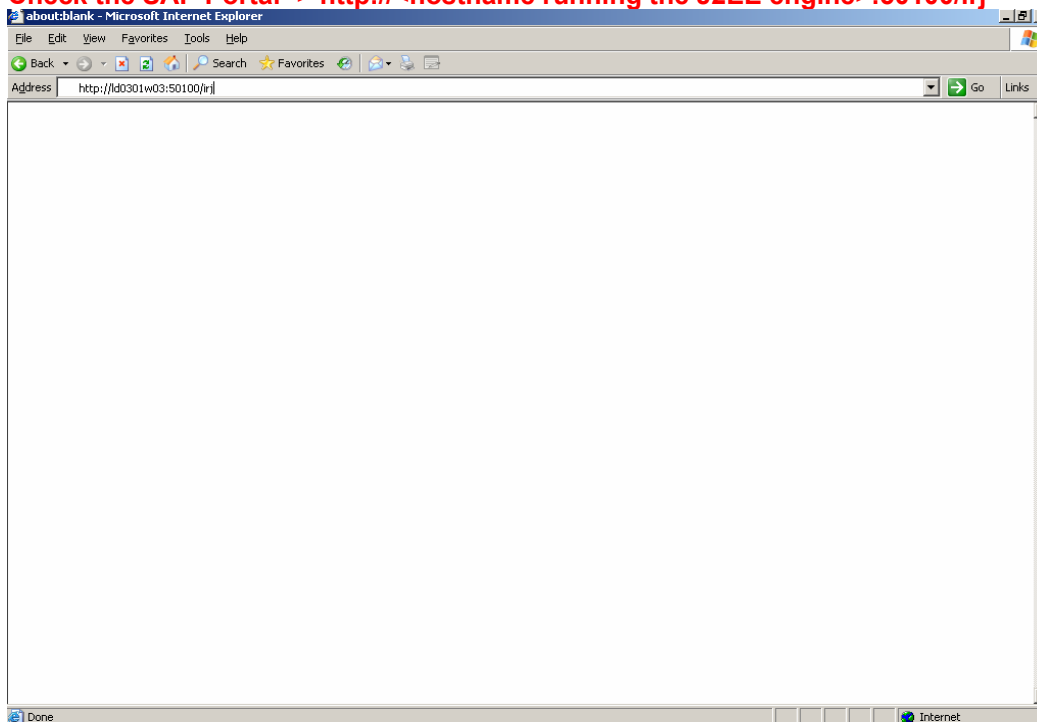


**Check the SAP NetWeaver Administrator -> <http://<hostname running the J2EE engine>:50100/nwa>**



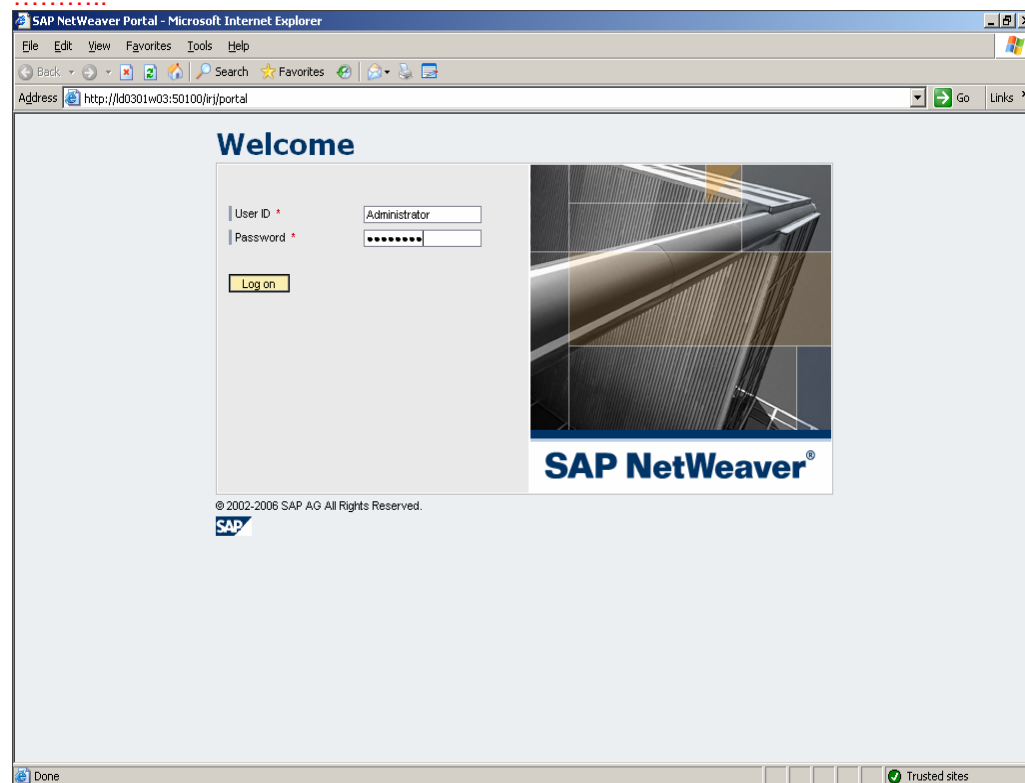


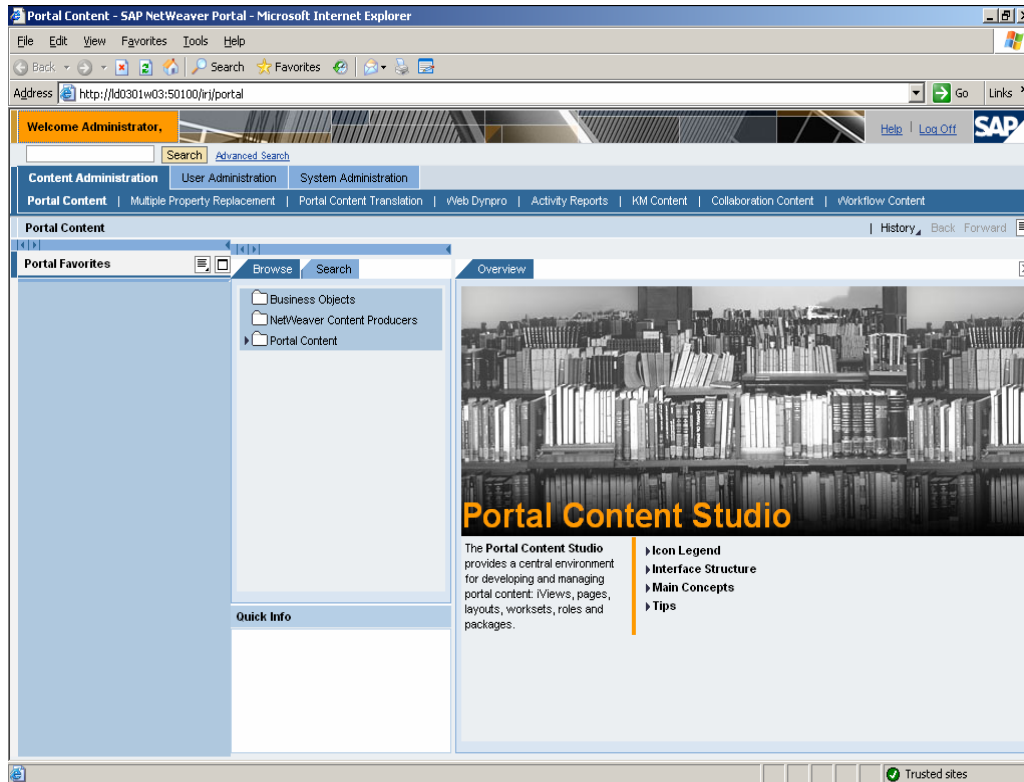
**Check the SAP Portal -> <http://<hostname running the J2EE engine>:50100/irj>**



.....Loading portal..so please be patient.

.....





© Copyright 2006 SAP AG. All rights reserved. SAP, R/3, mySAP, mySAP.com, xApps, xApp, SAP NetWeaver, and other SAP products and services mentioned herein as well as their respective logos are trademarks or registered trademarks of SAP AG in Germany and in several other countries all over the world. All other product and service names mentioned are the trademarks of their respective companies. Data contained in this document serves informational purposes only. National product specifications may vary. These materials are subject to change without notice. These materials are provided by SAP AG and its affiliated companies ("SAP Group") for informational purposes only, without representation or warranty of any kind, and SAP Group shall not be liable for errors or omissions with respect to the materials. The only warranties for SAP Group products and services are those that are set forth in the express warranty statements accompanying such products and services, if any. Nothing herein should be construed as constituting an additional warranty.